

Stock program 26.2



f-tronic – installing innovation

We find electrical installation easy.

Why do we say that? Because we make it easy. While never losing sight of efficiency.

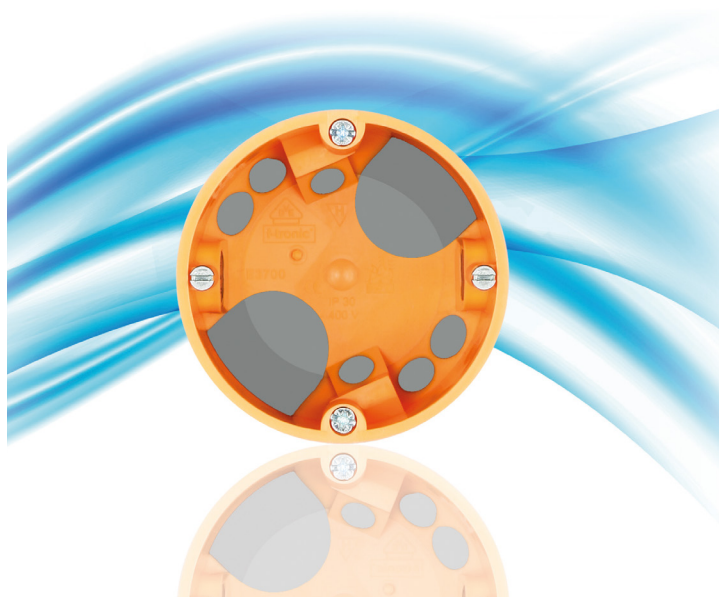
As a mass producer, with more than 100.000 plastic injection parts per day, we know what a huge challenge we face. That's what makes it so attractive.

In product development, we always strive to exceed expectations. Especially our own. Because only when we exceed expectations, are we 100 % sure that we have created something special, without compromises. And over 1.000 parts prove: We never get enough of it.

We have learnt a lot in the 25 years since our company was founded. And that's why we can do so much. Think: "Full-range supplier". That's why we are well-known in so many European countries – both in electrical wholesale and with installers. And we feel it is our duty to think of great innovations for tomorrow, today.

We just call it differently. We call it: f-tronic.

Quality – Made in Germany



f-tronic Stock Program Content

Field distributors 5

Field distributors	5
Distribution boards.....	6

Small distributors 7

Small distributors JUMBO	9
Small distributors JUMBO, accessories	13
Communication distributors JUMBO K.....	15
Wall-mounted small distributors VISION	17
Wall-mounted small distributors VISION, accessories	19
Wall-mounted automatic boxes	21
Wall-mounted communication distributor VISION K.....	23
Damp area small distributors.....	25
Damp area small distributors, accessories	29
Terminal technology.....	31

Socket boxes 37

Flush-mounted installation, windproof.....	39
Flush-mounted installation.....	40
Flush-mounted installation solid	42
Flush mounted installation accessories.....	43
Cavity wall installation, windproof.....	47
Cavity wall installation	49
Solid cavity wall installation	51
Cavity wall installation accessories	53
Built-in light housing	57
Damp area installation.....	59
Trunking boxes / surface-mounted installation.....	61
Concrete installation	63
Multi function box.....	83

Equipment carrier for ETICS / TIE..... 87

TIE-Systeme.....	87
TIE-systems accessories.....	95

Grounding material 97

Cable Management System 99

Industrial enclosures..... 103

PVC Industrial enclosures	105
PVC industrial enclosures accessories	107

Field distributors

For intelligent installation technology for commercial and public buildings, but also for residential housing. Especially when it comes to large-scale projects and time and costs are of the essence, our FV field distributors and VS distribution boards will make you a winner.

Advantages at a glance

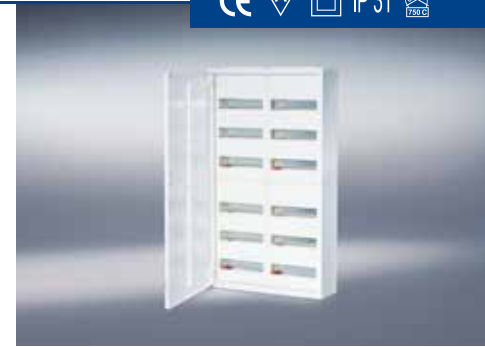
- Attractively designed housing made from 1 mm thick, powder-coated sheet steel
- Unique, slide-out mounting system, for quick and flexible wall mounting
- Door can be removed without tools and optionally attached on left or right
- Large door opening angle
- Cover strips and N/PE plug terminals included in delivery
- Hat rails can be lowered
- Large wiring area behind the hat rails

An all-rounder!



Field distributors

- Cabinet depth 165 mm
- Large cable inlets at the bottom, top and backside on each panel width
- Top and bottom cable inlet with press-out membrane, for quicker and easier handling without additional tools
- All covers made with lateral partitions
- From three panel widths, with double door
- Different lock versions possible – also DIN cylinder lock
- Including 1 x ZSSKN34 and 1 x ZSSKPE34 plug terminal per field
- Material: sheet steel, high-quality powder coated



Item No.	Type	Design	H x W x D (mm)	Colour	SU	CB	PL
7110220	FV2-3	2 field, 3-row, 72 modules	500 x 550 x 165	white	1	1	24
7110221	FV3-3	3 field, 3-row, 108 modules	500 x 800 x 165	white	1	1	15
7110222	FV1-4	1 field, 4-row, 48 modules	650 x 300 x 165	white	1	1	40
7110223	FV2-4	2 field, 4-row, 96 modules	650 x 550 x 165	white	1	1	24
7110224	FV3-4	3 field, 4-row, 144 modules	650 x 800 x 165	white	1	1	15
7110225	FV1-5	1 field, 5-row, 60 modules	800 x 300 x 165	white	1	1	20
7110226	FV2-5	2 field, 5-row, 120 modules	800 x 550 x 165	white	1	1	16
7110227	FV3-5	3 field, 5-row, 180 modules	800 x 800 x 165	white	1	1	10
7110228	FV4-5	4 field, 5-row, 240 modules	800 x 1050 x 165	white	1	1	6
7110229	FV1-6	1 field, 6-row, 72 modules	950 x 300 x 165	white	1	1	18
7110230	FV2-6	2 field, 6-row, 144 modules	950 x 550 x 165	white	1	1	10
7110231	FV3-6	3 field, 6-row, 216 modules	950 x 800 x 165	white	1	1	8
7110232	FV4-6	4 field, 6-row, 288 modules	950 x 1050 x 165	white	1	1	6

Distribution boards

- Design as field distributors
- Cabinet depth including fixing lugs 210 mm
- Including 1 x ZSSKN34 and 1 x ZSSKPE34 plug terminal per field
- Material: sheet steel, high-quality powder coated



Item-No	Type	Design	H x W x D (mm)	Colour	SU	CB	PL
7110240	VS1-6	1 field, 6-row, 72 modules	950 x 300 x 210	white	1	1	15
7110241	VS2-6	2 field, 6-row, 144 modules	950 x 550 x 210	white	1	1	8
7110242	VS3-6	3 field, 6-row, 216 modules	950 x 800 x 210	white	1	1	7
7110243	VS4-6	4 field, 6-row, 288 modules	950 x 1050 x 210	white	1	1	3
7110244	VS5-6	5 field, 6-row, 360 modules	950 x 1300 x 210	white	1	1	3
7110245	VS1-7	1 field, 7-row, 84 modules	1100 x 300 x 210	white	1	1	15
7110246	VS2-7	2 field, 7-row, 168 modules	1100 x 550 x 210	white	1	1	8
7110247	VS3-7	3 field, 7-row, 252 modules	1100 x 800 x 210	white	1	1	5
7110248	VS4-7	4 field, 7-row, 336 modules	1100 x 1050 x 210	white	1	1	3
7110249	VS5-7	5 field, 7-row, 420 modules	1100 x 1300 x 210	white	1	1	3
7110250	VS1-8	1 field, 8-row, 96 modules	1250 x 300 x 210	white	1	1	8
7110251	VS2-8	2 field, 8-row, 192 modules	1250 x 550 x 210	white	1	1	6
7110252	VS3-8	3 field, 8-row, 288 modules	1250 x 800 x 210	white	1	1	5
7110253	VS4-8	4 field, 8-row, 384 modules	1250 x 1050 x 210	white	1	1	3
7110254	VS5-8	5 field, 8-row, 480 modules	1250 x 1300 x 210	white	1	1	3
7110255	VS1-9	1 field, 9-row, 108 modules	1400 x 300 x 210	white	1	1	8
7110256	VS2-9	2 field, 9-row, 216 modules	1400 x 550 x 210	white	1	1	6
7110257	VS3-9	3 field, 9-row, 324 modules	1400 x 800 x 210	white	1	1	5
7110258	VS4-9	4 field, 9-row, 432 modules	1400 x 1050 x 210	white	1	1	3
7110259	VS5-9	5 field, 9-row, 540 modules	1400 x 1300 x 210	white	1	1	3

True space marvels!



Small distributors

The right distributor for any application

Their variety can hardly be beaten. Whether flush-mounted, cavity wall, wall-mounted, communication or damp area distributors – f-tronic has them all! Our small distributor range has the right product for any application.

The JUMBO and VISION series allows for the combination of circuit distribution and communication application in the same design.

For installation in damp areas we offer robust and resistant distributors up to protection class IP 65 and a size of up to 70 DU.

A high level of quality is self-evident, like for example the separate neutral terminal assembly for fulfilling the requirement of the DIN VDE 0100-410 for the additional FI protection.

Small distributors 7

Small distributors JUMBO	9
Small distributors JUMBO, accessories	13
Communication distributors JUMBO K.....	15
Wall-mounted small distributors VISION.....	17
Wall-mounted small distributors VISION, accessories	19
Wall-mounted automatic boxes	21
Wall-mounted communication distributors VISION K	23
Damp area small distributors.....	25
Damp area small distributors, accessories	29
Terminal technology.....	31



Wall-mounted, cavity and flush-mounted wall distributors – each series including communication distributor



Damp area small distributors

The small distributor JUMBO

The name says it all: JUMBO is the small distributor with extra-large capacity that offers two advantages: On the one hand, it absorbs more thermal loss and thus allows genuine 12 + 2 modules in up to four rows. On the other hand the large connection spaces offer plenty room for an even more convenient installation.

Advantages at a glance

- Extra 50 % wiring space compared to conventional small distributors: 165 mm connection space on top, 145 mm connection space at bottom, plus wiring space at the sides
- Optimum heat removal thanks to integrated ventilation slots
- Strain relief feature at top and bottom
- Integrated levels for lining up the wall box
- Snap closing at two points for safety housing
- Modern and comfortable terminal technology

12+2 24+4 36+6 48+8



Width mm Outer dimensions including frame	365	365	365	365
Width mm Niche dimensions for wall box	359	359	359	359
Width mm Cut out dimension for cavity wall installation	323	323	323	323
Height mm Outer dimensions including frame	400	525	650	775
Height mm Niche dimensions for wall box	393	518	643	768
Height mm Cut out dimension for cavity wall installation	360	485	610	735

Strong arguments for a strong distributor



Triple socket:

The hardware components are easily and clearly mounted on a perforated plate in the JUMBO communication distributor. The distributors are equipped with a triple socket with increased contact protection for the supply of the components with line voltage. The plug power adapter can be optionally inserted horizontally or vertically.



Unique!

The integrated ventilation openings ensure circulation and removal of the thermal loss. Connection space of 165 mm on the top and 145 mm at the bottom as well as connection spaces at the sides provide plenty room for a convenient installation.



As the integrated levels are visible from the front and from the back, the wall box can be used as an installation template. The 1 and 2-row distributors JUMBO of the flush mounted small distributor series are equipped with a shared PE/N-terminal and an extra FI Terminal. The 3-row and 4-row distributors are equipped with an integrated PE and N clamp and an additional shared N/N clamp. Due to the three N potentials (smallest N potential 14 slots, 1.5 to 4 mm² and three screw clamps, 2.5 to 25 mm²), assembling the electric circuit distributor is easy to do, without requiring wiring, with the group RCD or with the RCBO switches. The terminals are arranged in the wiring spaces in a space saving way and thus ensure optimal use. The JUMBO is optionally available completely with screw clamping technology.



Cavity wall anchor set

Combination small distributor JUMBO with plug terminal for FM (flush-mounted) and CW (cavity wall)

- Can be flush-mounted or installed in a cavity wall
- PE/N plug terminals depending on design
- Additional RCD clamps included
- Generous wiring space
- Strain relief feature
- 12+2 modules per row
- For devices up to 63 A
- Including metal frame and door
- Material: PS, recyclable / door and frame - sheet steel, high quality powder-coated

Item No.	Type	Design	H x W x D (mm)	Colour	SU	CB	PL
7250012	JUMBO12+2	1-row, 12+2 modules, with metal frame and door	400 x 365 x 98	white	1	1	90
7250017	JUMBO24+4	2-row, 24+4 modules, with metal frame and door	525 x 365 x 98	white	1	1	60
7250022	JUMBO36+6	3-row, 36+6 modules, with metal frame and door	650 x 365 x 98	white	1	1	45
7250028	JUMBO48+8	4-row, 48+8 modules, with metal frame and door	775 x 365 x 98	white	1	1	45
7290079	HWA-SET *	Cavity wall anchor set for JUMBO distributor			1	10	2.880
7290098	MH-SET *	Mounting bracket set for FM (flush-mounted) installation			1	30	2.160

* JUMBO accessories sold separately - from p.13



Combination small distributor JUMBO with screw clamp and equipment rack for FM (flush-mounted) and CW (cavity wall)

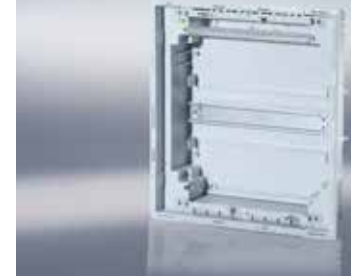
- Can be flush-mounted or installed in a cavity wall
- PE/N screw terminals depending on design
- Additional RCD clamps included
- Generous wiring space
- Strain relief feature
- 12+2 modules per row
- For devices up to 63 A
- Including metal frame and door
- Material: PS, recyclable / door and frame - sheet steel, high quality powder-coated

Item No.	Type	Design	H x W x D (mm)	Colour	SU	CB	PL
7250015	JUMBO 12+2-XX	Combi-distributor, 1-row, 12+2 modules*	400 x 365 x 98	white	1	1	90
7250020	JUMBO 24+4-XX	Combi-distributor, 2-row, 24+4 modules, including equipment rack*	525 x 365 x 98	white	1	1	60
7250025	JUMBO 36+6-XX	Combi-distributor, 3-row, 36+6 modules, including equipment rack*	650 x 365 x 98	white	1	1	45
7250031	JUMBO 48+8-XX	Combi-distributor, 4-row, 48+8 modules, including equipment rack*	775 x 365 x 98	white	1	1	45
7290079	HWA-SET	Cavity wall anchor set for JUMBO distributors			1	10	2.880
7290098	MH-SET	Mounting bracket set for FM (flush-mounted) installation			1	30	2.160

* With metal frame and door

Flush-mounted wall small distributor JUMBO with screw clamp

- For installation in flush-mounted walls
- PE/N screw clamps depending on design
- Generous wiring space
- Strain relief feature
- 12+2 modules per row
- For devices up to 63 A
- Including metal frame and door in white
- Material: PS, recyclable / door and frame - sheet steel, high quality powder-coated



Item No.	Type	Design	H x W x D (mm)	Colour	SU	CB	PL
7210028	UPV12+2ST	1-row, 12+2 modules, with metal frame and door	400 x 365 x 98	grey/white	1	1	90
7210029	UPV24+4ST	2-row, 24+4 modules, with metal frame and door	525 x 365 x 98	grey/white	1	1	60
7210030	UPV36+6ST	3-row, 36+6 modules, with metal frame and door	650 x 365 x 98	grey/white	1	1	45
7210031	UPV48+8ST	4-row, 48+8 modules, with metal frame and door	775 x 365 x 98	grey/white	1	1	45

Cavity wall small distributor JUMBO with screw clamp

- For installation in cavity walls
- PE/N screw clamps depending on design
- Generous wiring space
- Strain relief feature
- 12+2 modules per row
- For devices up to 63 A
- Including metal frame and door
- Material: PS, recyclable



Item No.	Type	Design	H x W x D (mm)	Colour	SU	CB	PL
7230015	HWV12+2ST	1-row, 12+2 modules, with metal frame and door	400 x 365 x 98	white	1	1	90
7230016	HWV24+4ST	2-row, 24+4 modules, with metal frame and door	525 x 365 x 98	white	1	1	60
7230017	HWV36+6ST	3-row, 36+6 modules, with metal frame and door	650 x 365 x 98	white	1	1	45
7230018	HWV48+8ST	4-row, 48+8 modules, with metal frame and door	775 x 365 x 98	white	1	1	45

Terminal fitting JUMBO

Item No.	Type	Design	JUMBO 12+2	JUMBO 24+4	JUMBO 36+6	JUMBO 48+8
9910011	SKN34	N plug terminal, screw connections: 6 x 25 mm ² + plug connections: 28 x 4 mm ²			1 x	1 x
9910012	SKPE34	PE plug terminal, screw connections: 6 x 25 mm ² + plug connections: 28 x 4 mm ²			1 x	1 x
9910010	SKN17PE	PE-N plug terminal, screw connections: 3 x 25 mm ² each, + 14 x 4 mm ²	1 x	1 x		
9910009	SKN17N	N-N plug terminal, screw connections: 3 x 25 mm ² each, + plug connections: 14 x 4 mm ²			1 x	1 x
7290002	160030	RCD screw clamp, 3 x 16 mm ² + 2 x 10 mm ²	1 x	1 x		

info



Cover strips, universal

- Self-extinguishing up to 850°C – therefore suitable for all types of distributors
- Material: PS, recyclable

Item No.	Type	Design	Colour	SU	CB	PL
7290032	ADS12W	12 modules	white	10	500	16.000
7290031	ADS12GR	12 modules	grey	10	500	16.000



TSV

Accessories JUMBO

Item No.	Type	Design	SU	CB	PL
7220086	TSV	Key lock with two keys	1	20	8.400
7290097	MK-SET	Wall claw set (4 pieces)	1	10	8.400
7290098	MH-SET	Mounting bracket set for UP assembly (4 pieces)	1	30	2.160
7290107	VK-SET	Connection clasp set (2 pieces)	1	30	5.760
7290079	HWA-SET	Cavity wall anchor set (4 pieces)	1	10	2.880
7290090	T+RJUMBO12+2	Door and frame for Jumbo distributor single row	1	12	96
7290091	T+RJUMBO24+4	Door and frame for Jumbo distributor double row	1	12	96
7290092	T+RJUMBO36+6	Door and frame for Jumbo distributor triple row	1	12	48
7290093	T+RJUMBO48+8	Door and frame for Jumbo distributor four rows	1	12	24



Wall claw



Mounting bracket

Plug terminals

Item No.	Type	Design	SU	CB	PL
9910009	SKN17N	N-N plug terminal, screw connections: 3 x 25 mm ² , plug connections: 14 x 4 mm ²	1	20	1.440
9910010	SKN17PE	PE-N plug terminal, screw connections: 3 x 25 mm ² , plug connections: 14 x 4 mm ²	1	20	1.440
9910011	SKN34	N plug terminal, screw connections: 6 x 25 mm ² , plug connections: 28 x 4 mm ²	1	20	1.440
9910012	SKPE34	PE plug terminal, screw connections: 6 x 25 mm ² , plug connections: 28 x 4 mm ²	1	20	1.440
7110238	PEN310	PEN bridge, blue, 10 mm ² , 310 mm	1	20	4.320
7110239	N14	N plug terminal, 14-pole	1	10	4.000



Screw clamps

Item No.	Type	Design	SU	CB	PL
7290084	PEN143-2	PE/N clamp, 2 connections for 3 x 16 mm ² each and 14 x 10 mm ²	1	20	1.440
7290083	PE286-1	PE clamp, connections for 6 x 16 mm ² and 28 x 10 mm ²	1	20	1.440
7290081	N286-1	N clamp, connections for 6 x 16 mm ² and 28 x 10 mm ²	1	20	1.440
7290082	NN143-2	NN clamp, 2 connections for 3 x 16 mm ² each and 14 x 10 mm ²	1	20	1.440
7290002	160030	RCD clamp for 3 x 16 mm ² and 2 x 10 mm ²	1	30	8.400



Triple socket

- Offers space for 3 euro plugs
- Mains plug can optionally be plugged in horizontally or vertically
- Suitable for all f-tronic distributors of the JUMBO and VISION series
- Material: PS, recyclable

Item No.	Type	Design	Colour	SU	CB	PL
7290113	STECKD3	Triple socket for f-tronic distributors JUMBO and VISION	white	1	32	1.280



More space for your communication – the JUMBO K

“To do justice to the importance of the Internet for multimedia applications (including telephony), an application-neutral communication cable system may be necessary.” (DIN 18015 Part 2). An installed communication distributor is an equipment criteria for an electric installation in accordance with RAL-RG 678 and therefore acts like a business card for future-oriented electric installations by the trade.

With the communication distributor JUMBO K for cavity wall and flush-mount installation, f-tronic offers to install trend-setting and standard-compliant technology for multimedia applications such as telecommunications and BK distributors for installers and construction managers. In addition to the JUMBO distributors, f-tronic offers the communication distributor in 3-row or 4-row design, suited for both flush-mounted and cavity wall installations. The communication distributors functionally complement our full small distributors series for the distribution of the electrical circuit. In addition the installer allows the construction manager convenient access to the hardware components, e.g. modem, wireless router, or Switch. The supply with mains voltage thanks to the standard triple socket with offset arranged slots is guaranteed. A space-saving use of transformer plugs is easily possible due to the arrangement of the slots. A construction manager will appreciate this tidy solution from f-tronic. The thermal loss in the distributor dissipates via the ventilation slots in the door.

The communication distributors from f-tronic meet all the provisions of DIN 18015-1 through DIN 18015-4. At the same time, comfort and allow for access to the hardware components at any time they guarantee a high level of installation.

- Plus 50% wiring space compared to conventional small distributors: upper connection space 165 mm, plus lateral wiring room
- Optimized heat dissipation through integrated air vents
- Strain relief options above and below
- Integrated bubble levels to align the wall box
- Plastic base plate for easy mounting



Future-orientated installation technology – the JUMBO K



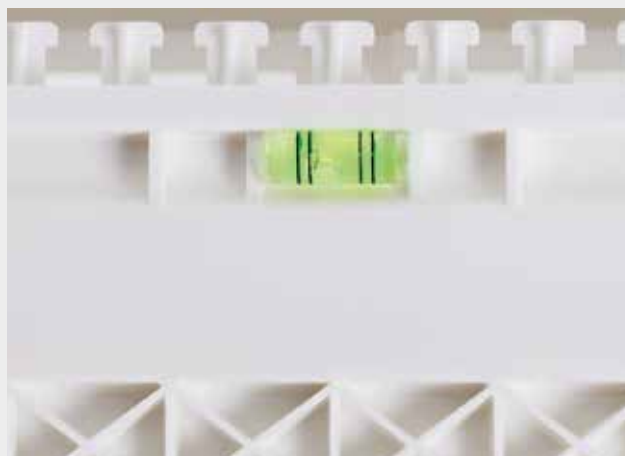
The connection clasp set included allows for vertical or horizontal side by side arrangement. This way communication distributors and circuit distributors can be combined with out any problems. Clasp set included.



The patch panel integrated in the upper part allows for simple installation of patch modules in the „Keystone-Format“.



The hardware components are fixed to the plastic equipment racks, potential-free, and supplied from the mains via the triple socket.



The built-in bubble levels on the front and back allow fast and exact alignment of the distributor.

Communication distributors JUMBO K for FM (flush-mounted) and CW (cavity wall)

- Material: PS, recyclable / door and frame - sheet steel, high quality powder-coated/
Patch panel - steel

Item No.	Type	Design	H x W x D (mm)	Colour	SU	CB	PL
7250027	JUMBO36K	For FM (flush-mounted) and CW (cavity wall) installations, 3-row, with patch panel, mounting plate and 3-way electric socket including HWA set*	650 x 365 x 98	white	1	1	45
7250033	JUMBO48K	For FM (flush-mounted) and CW (cavity wall) installations, 4-row, with patch panel, mounting plate and 3-way electric socket including HWA set*	775 x 365 x 98	white	1	1	45
7290113	STECKD3	Triple socket for f-tronic distributors JUMBO and VISION		white	1	32	1.280
7290116	PATCH12	Patch panel for easy mounting of patch modules in the „Keystone-Format“			1	20	960

* With metal frame and door
incl. VK-Set

Small distributors



Our VISION for your future installations

This wall-mounted distributor series leaves nothing to be desired. Seven cable inlet possibilities each in the top, middle and bottom connection space enormously simplify reconstruction work. A large wiring space behind the hat profile rail is a given, just as the additional lateral wiring space. In addition, this distributor series offers a plastic rail in the upper and lower connection space for strain relief of the inserted cables. The distributors are optionally equipped with screw clamps or plug terminals for PE and N conductor connections which exceed the requirements specified in DIN 43871.

The attractive and comparably stable covering cap offers additional lateral wiring inlet openings, also making lateral insertions possible, with no trouble at all. In addition to numerous door systems made from steel sheet or plastic, the doors can also be locked with an additional plug lock.

Advantages at a glance

- Large wiring space
- PE/N-plug terminal included in the scope of delivery
- Strain relief feature for inserted cables at top and bottom
- Cable inlet possibilities in the top, middle and bottom connection frame
- Various door systems made from metal or plastic

12+2 24+4 36+6 48+8



	APV12+2	APV24+2	APV36+6	APV48+8
Height mm	250	375	515	640
Width mm	305	305	305	305
Depth mm	99	99	99	99

Wall-mounted small distributors VISION with plug terminal

- 12+2 modules per row
- Cable inlets on all sides
- Generous wiring space
- Strain relief feature
- For devices up to 63 A
- Material: PS, recyclable

Item No.	Type	Design	H x W x D (mm)	Colour	SU	CB	PL
7220044	APV12+2	1-row, 12+2 modules, with plug terminal PE/N and RCD screw clamp, housing without door	250 x 305 x 99	white	1	12	144
7220050	APV24+4	2-row, 24+4 modules, with plug terminal PE/N and RCD screw clamp, housing without door	375 x 305 x 99	white	1	8	96
7220056	APV36+6	3-row, 36+6 modules, with plug terminal PE/N and N/N, housing without door	515 x 305 x 99	white	1	6	72
7220061	APV48+8	4-row, 48+8 modules, with plug terminal PE/N and N/N, housing without door	640 x 305 x 99	white	1	5	60



Wall-mounted small distributors VISION with screw clamp

- 12+2 modules per row
- Cable inlets on all sides
- Generous wiring space
- Strain relief feature
- For devices up to 63 A
- Material: PS, recyclable

Item No.	Type	Design	H x W x D (mm)	Colour	SU	CB	PL
7220045	APV12+2PEN	1-row, 12+2 modules, with screw clamp PE/N, housing without door	250 x 305 x 99	white	1	12	144
7220051	APV24+4PEN	2-row, 24+4 modules, with screw clamp PE/N, housing without door	375 x 305 x 99	white	1	8	96
7220057	APV36+6PEN	3-row, 36+6 modules, with screw clamp PE/N, housing without door	515 x 305 x 99	white	1	6	72
7220062	APV48+8PEN	4-row, 48+8 modules, with screw clamp PE/N, housing without door	640 x 305 x 99	white	1	5	60



Terminal fitting VISION

Item No.	Type	Design	VISION 12+2	VISION 24+4	VISION 36+6	VISION 48+8
9910011	SKN34	N plug terminal, screw connections: 6 x 25 mm ² + plug connections: 28 x 4 mm ²			1 x	1 x
9910012	SKPE34	PE plug terminal, screw connections: 6 x 25 mm ² + plug connections: 28 x 4 mm ²			1 x	1 x
9910010	SKN17PE	PE-N plug terminal, screw connections: 3 x 25 mm ² each, + 14 x 4 mm ²	1 x	1 x		
9910009	SKN17N	N-N plug terminal, screw connections: 3 x 25 mm ² each, + plug connections: 14 x 4 mm ²			1 x	1 x
7290002	160030	RCD screw clamp, 3 x 16 mm ² + 2 x 10 mm ²	1 x	1 x		

info



Door system for wall-mounted small distributors VISION

- The right doors for our wall-mounted small distributors VISION
- Execution white in gloss plastic or metal
- Including snap fit, optional with key lock
- Left / right attachment possible
- Material: Door made of metal - steel sheet, high-quality powder-coated
- Material: Door made of plastic - PC, recyclable



Item No.	Type	Design	Colour	SU	CB	PL
7220046	APV12+2TM	Door made of metal, for 1-row VISION distributor	white	1	10	560
7220052	APV24+4TM	Door made of metal, for 2-row VISION distributor	white	1	10	320
7220058	APV36+6TM	Door made of metal, for 3-row VISION distributor	white	1	20	160
7220063	APV48+8TM	Door made of metal, for 4-row VISION distributor	white	1	40	160
7220048	APV12+2TW	Door made of plastic, glossy, for 1-row VISION distributor	white	1	10	560
7220054	APV24+4TW	Door made of plastic, glossy, for 2-row VISION distributor	white	1	15	480
7220060	APV36+6TW	Door made of plastic, glossy, for 3-row VISION distributor	white	1	20	160
7220065	APV48+8TW	Door made of plastic, glossy, for 4-row VISION distributor	white	1	40	160



Triple socket

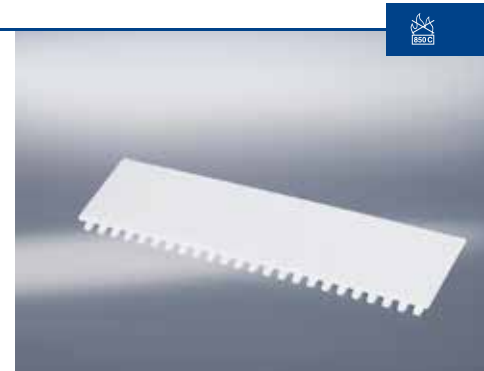
- Offers space for 3 euro plugs
- Mains plug can optionally be plugged in horizontally or vertically
- Suitable for all f-tronic distributors of the JUMBO and VISION series
- Material: PS, recyclable

Item No.	Type	Design	Colour	SU	CB	PL
7290113	STECKD3	Triple socket for f-tronic distributors JUMBO and VISION	white	1	32	1.280

Cover strips, universal

- Self-extinguishing up to 850 °C – therefore suitable for all types of distributors
- Material: PS, recyclable

Item No.	Type	Design	Colour	SU	CB	PL
7290032	ADS12W	12 modules	white	10	500	16.000
7290031	ADS12GR	12 modules	grey	10	500	16.000



Key lock with two keys

Item No.	Type	Design	SU	CB	PL
7220086	TSV	Key lock with two keys	1	20	8.400



Plug terminals

Item No.	Type	Design	SU	CB	PL
9910009	SKN17N	N-N plug terminal, screw connections: 3 x 25 mm ² , plug connections: 14 x 4 mm ²	1	20	1.440
9910010	SKN17PE	PE-N plug terminal, screw connections: 3 x 25 mm ² , plug connections: 14 x 4 mm ²	1	20	1.440
9910011	SKN34	N plug terminal, screw connections: 6 x 25 mm ² , plug connections: 28 x 4 mm ²	1	20	1.440
9910012	SKPE34	PE plug terminal, screw connections: 6 x 25 mm ² , plug connections: 28 x 4 mm ²	1	20	1.440
7110238	PEN310	PEN bridge, blue, 10 mm ² , 310 mm	1	20	4.320
7110239	N14	N plug terminal, 14-pole	1	10	4.000



Screw clamps

Item No.	Type	Design	SU	CB	PL
7290084	PEN143-2	PE/N clamp, 2 connections for 3 x 16 mm ² each and 14 x 10 mm ²	1	20	1.440
7290083	PE286-1	PE clamp, connections for 6 x 16 mm ² and 28 x 10 mm ²	1	20	1.440
7290081	N286-1	N clamp, connections for 6 x 16 mm ² and 28 x 10 mm ²	1	20	1.440
7290082	NN143-2	NN clamp, 2 connections for 3 x 16 mm ² each and 14 x 10 mm ²	1	20	1.440
7290002	160030	RCD clamp for 3 x 16 mm ² and 2 x 10 mm ²	1	30	8.400





Wall-mounted automatic boxes

- For devices up to 63 A
- With rear wall
- With fitted standard profile rail
- Material: PS, recyclable

Item No.	Type	Design	H x W x D (mm)	Colour	SU	CB	PL
7260010	KV02	2 modules without terminals	140 x 50 x 65	white	1	192	3.072
7260011	KV02K	2 modules with 2-pole PE/N terminals	140 x 50 x 65	white	1	192	3.072
7260012	KV04	4 modules without terminals	160 x 94 x 65	white	1	84	1.344
7260013	KV04K	4 modules with 4-pole PE/N terminals	160 x 94 x 65	white	1	84	1.344
7260014	KV06	6 modules without terminals	160 x 140 x 65	white	1	56	896
7260015	KV06K	6 modules with 6-pole PE/N terminals	160 x 140 x 65	white	1	56	896

f-tronic distribution boards

The quick and safe way to the right distribution board

The multitude of requirements stipulated by energy supply companies in Germany makes the correct project planning for distribution boards very difficult for electricians. Errors in planning and project implementation are quickly made. Coordination often takes a lot of effort and time and is difficult. Errors in layout and project planning can result in delays, non-acceptance or, at worst, new installations. This is where we come in; we will take over this task with our experience and our excellent contacts with energy suppliers.

Advantages at a glance

- Swift processes, competent project managers and a project software allow us to work out the distribution boards exactly to the requirements of the artisans, taking the various provisions of local energy suppliers into account.
- In only a few days, we can plan distribution boards according to the structural requirements of all energy suppliers; we prepare clearly arranged documentation, manufacture fully-equipped boards in our plant in Saarbrücken and deliver to the wholesale of your choice. In very urgent cases we can even come to your construction site.
- Our service provides secure planning for the electrician's construction site and wholesale purchasing significantly lowers storage costs. Large inventories due to the multitude of variants no longer apply.

Find the perfect technical solution in our Distribution Boards brochure.



VISION K

The DIN 18015 Part 2 clearly instructs the trade: "To do justice to the importance of the Internet for multimedia applications (including telephony), an application-neutral communication cable system may be necessary." (DIN 18015 Part 2). A communication distributor is an equipment criteria for an electric installation in accordance with RAL-RG 678 and therefore acts like a business card for future-oriented electric installations by the trade.

With the communication distributor VISION K, f-tronic offers electricians and constructors a future-oriented technology, which meets technical standards, for the installation of multi-media applications, e.g. telecommunication and BC distribution in a wall-mounted distributor. In addition to the VISION circuit distributors, f-tronic offers the communication distributor in 3-row or 4-row design for wall-mounted installations.

The patch panel integrated in the upper part allows for simple installation of patch modules. The hardware components such as modem, wireless router, or switch are fixed floating on the plastic carrier plate. The built-in hardware components are supplied via the standard triple socket with mains voltage. The optimal arrangement allows you to save space using transformer plugs. The communication distributors functionally complement our full small distributors series for the distribution of the electrical circuit. The thermal loss in the distributor dissipates via the ventilation slots in the door.

The communication distributors from f-tronic meet all the provisions of DIN 18015-1 through DIN 18015-4. At the same time, they guarantee a high level of installation comfort and allow for access to the hardware components at any time.

- Large wiring space
- Strain relief opportunities for imported lines above and below
- Rear cable entry points in the upper, middle and lower area
- Plastic base plate for easy mounting





The hardware components are fixed to the plastic equipment racks, potential-free, and supplied from the mains via the triple socket.



The patch panel integrated in the upper part allows for simple installation of patch modules in the „Keystone-Format“.

Wall-mounted communication distributors VISION K

- Material: PS, recyclable / door and frame - sheet steel, high quality powder-coated
Patch panel - steel

Item No.	Type	Design	H x W x D (mm)	Colour	SU	CB	PL
7220087	APV36K	for on-wall installation 3-row, with patch panel, mounting plate, 3-way electric socket and door made of metal	515 x 305 x 99	white	1	6	72
7220088	APV48K	for on-wall installation 4-row, with patch panel, mounting plate, 3-way electric socket and door made of metal	640 x 305 x 99	white	1	5	60
7290113	STECKD3	Triple socket for f-tronic distributors JUMBO and VISION		white	1	32	1.280
7290116	PATCH12	Patch panel for easy mounting of patch modules in the „Keystone-Format“			1	20	960



Robust damp area small distributors IP 65

With these modular small distributors we offer robust, resistant products for difficult installation environments in industrial plants, workshops, cellars or garages. The housing is suitable for use in a sheltered outdoor area, according to the protection rating. When used in unprotected outdoor areas, the casing must be protected against weather-related stress such as rain, ice, snow, or UV radiation by installation in an outdoor housing.

The IP 65 EN 60 529/DIN VDE 0470 distributors consist of impact-resistant plastic and are suited for devices up to 63 A.

The system housings can be combined with each other. The APV14AR to APV56AR models are also available with 150 mm extra connection space, should you require additional space for incoming and outgoing cables. These AR models are perfectly suited for the installation of built-in sockets for use as robust socket distributors.

Advantages at a glance

- Large space for comfortable installation
- Available from compact 4-module to large 70-module units
- Also available with additional connection space
- With integrated level for aligning the distributor during installation
- For industrial halls, workshops, garages and cellars
- Cable cover, standard from APV 14



Damp area small distributors IP 65

Also available with additional 150 mm connection space. The 1-row to 4-row distributors of the AR series are equipped with additional connection space.



Available from 4 to 70 modules – the robust damp area small distributors from f-tronic.



Additional connection space for AR models. Suitable for example for construction of socket distributors.



The integrated level allows for quick aligning of the distributor during installation.



IP 55 damp area small distributors

- Splash-proof design
- Small distributor for devices up to 63 A
- Upper and lower section of high-quality plastic
- Door made of transparent, impact-resistant and weather-proof plastic
- Ideal for difficult installation environments in industrial plants, repair shops, basements or garages
- Suitable for applications in a sheltered outdoor area, according to the degree of protection
- For applications in unprotected outdoor areas, the housing must be protected against weather-related stress through installation in an outdoor housing
- Including PE/N terminals
- Including M20/M25/M32 double membrane nipples
- Material: PS, recyclable / door: PC clear glass, recyclable

Item No.	Type	Design	H x W x D (mm)	Colour	SU	CB	PL
7240050	KV04WDKE	1-row, 4 modules, with M20 cable inlets	180 x 125 x 90	grey	1	50	600
7240051	KV06WDKE	1-row, 6 modules, with M20 cable inlets	180 x 160 x 90	grey	1	40	480
7240052	KV10WDKE	1-row, 10 modules, with M20/M25 cable inlets	180 x 230 x 90	grey	1	25	300

Damp area small distributors IP 65

- Small distributor for devices up to 63 A
- Robust design made from impact-resistant plastic
- With integrated level for quick and professional alignment (from APV 14)
- Interchangeable single doors in smoke topaz for the far right and left, also lockable upon request
- Also available with transparent door on request
- Several system housings can be fitted in series and combined as required
- Ideal for difficult installation environments in industrial plants, repair shops, basements or garages
- Suitable for applications in a sheltered outdoor area, according to the degree of protection
- For applications in unprotected outdoor areas, the housing must be protected against weather-related stress through installation in an outdoor housing
- Including PE/N screw clamps, optionally, RCD-2 circle clamp is available
- Including M20/M25/M32 double membrane nipples
- Including Cable cover (from APV 14)
- Sealable
- Material: PS, recyclable, door PC smoky Topaz, recyclable

Item No.	Type	Design	H x W x D (mm)	Colour	SU	CB	PL
7240026	APV4	1-row, 1 x 4+1 modules	197 x 122,5 x 120	grey	1	210	420
7240031	APV6	1-row, 1 x 6+1 modules	200 x 160 x 120	grey	1	165	330
7240022	APV14	1-row, 1 x 12+2 modules	300 x 300 x 142	grey	1	1	90
7240024	APV28	2-row, 2 x 12+2 modules	450 x 300 x 142	grey	1	1	60
7240027	APV42	3-row, 3 x 12+2 modules	600 x 300 x 142	grey	1	1	48
7240029	APV56	4-row, 4 x 12+2 modules	750 x 300 x 142	grey	1	1	40
7240032	APV70	5-row, 5 x 12+2 modules	900 x 300 x 142	grey	1	1	30



Damp area small distributors IP 65 – with additional connection space - AR

- Additional 150 mm connection space for incoming and outgoing cables
- Small distributor for devices up to 63 A
- Robust design made from impact-resistant plastic
- With integrated level for quick and professional alignment (from APV 14)
- Interchangeable single doors in smoke topaz for the far right and left, also lockable upon request
- Also available with transparent door on request
- Several system housings can be fitted in series and combined as required
- Ideal for difficult installation environments in industrial plants, repair shops, basements or garages
- Suitable for applications in a sheltered outdoor area, according to the degree of protection
- For applications in unprotected outdoor areas, the housing must be protected against weather-related stress through installation in an outdoor housing
- Including PE/N screw clamps, optionally, RCD-2 circle clamp is available
- Including M20/M25/M32 double membrane nipples
- Including Cable cover (from APV 14)
- Sealable
- Material: PS, recyclable

Item No.	Type	Design	H x W x D (mm)	Colour	SU	CB	PL
7240023	APV14AR	1-row, 1 x 12+2 modules	450 x 300 x 142	grey	1	1	60
7240025	APV28AR	2-row, 2 x 12+2 modules	600 x 300 x 142	grey	1	1	48
7240028	APV42AR	3-row, 3 x 12+2 modules	750 x 300 x 142	grey	1	1	40
7240030	APV56AR	4-row, 4 x 12+2 modules	900 x 300 x 142	grey	1	1	30





Plug terminals

Item No.	Type	Design	SU	CB	PL
9910009	SKN17N	N-N plug terminal, screw connections: 3 x 25 mm ² , plug connections: 14 x 4 mm ²	1	20	1.440
9910010	SKN17PE	PE-N plug terminal, screw connections: 3 x 25 mm ² , plug connections: 14 x 4 mm ²	1	20	1.440
9910011	SKN34	N plug terminal, screw connections: 6 x 25 mm ² , plug connections: 28 x 4 mm ²	1	20	1.440
9910012	SKPE34	PE plug terminal, screw connections: 6 x 25 mm ² , plug connections: 28 x 4 mm ²	1	20	1.440
7110238	PEN310	PEN bridge, blue, 10 mm ² , 310 mm	1	20	4.320
7110239	N14	N plug terminal, 14-pole	1	10	4.000



Clamp adapter for IP 65

- Adapter required for all clamping installations in IP 65 damp area distributors

Item No.	Type	Design	SU	CB	PL
7290111	KAIP65	Terminal adapter set (2 pieces) for damp area distributors (terminals not included in scope of delivery)	1	10	7.680



Screw clamps

Item No.	Type	Design	SU	CB	PL
7290084	PEN143-2	PE/N clamp, 2 connections for 3 x 16 mm ² each and 14 x 10 mm ²	1	20	1.440
7290083	PE286-1	PE clamp, connections for 6 x 16 mm ² and 28 x 10 mm ²	1	20	1.440
7290081	N286-1	N clamp, connections for 6 x 16 mm ² and 28 x 10 mm ²	1	20	1.440
7290082	NN143-2	NN clamp, 2 connections for 3 x 16 mm ² each and 14 x 10 mm ²	1	20	1.440
7290002	160030	RCD clamp for 3 x 16 mm ² and 2 x 10 mm ²	1	30	8.400



Cover strips, universal

- Self-extinguishing up to 850 °C – therefore suitable for all types of distributors
- Material: PS, recyclable

Item No.	Type	Design	Colour	SU	CB	PL
7290032	ADS12W	12 modules	white	10	500	16.000
7290031	ADS12GR	12 modules	grey	10	500	16.000

Twisted nipples IP 54

■ Material: PVC

Item No.	Type	Design	Colour	SU	CB	PL
7290086	STM25	Twisted nipple M25	grey	20	800	51.200
7290087	STM32	Twisted nipple M32	grey	20	600	38.400
7290088	STM40	Twisted nipple M40	grey	20	400	25.600



Double membrane nipples IP 65

■ Material: PVC

Item No.	Type	Design	Colour	SU	CB	PL
7290059	DMS20	Double membrane nipples M20	grey	20	1.000	64.000
7290060	DMS25	Double membrane nipples M25	grey	20	800	51.200
7290061	DMS32	Double membrane nipples M32	grey	20	600	38.400



Accessories and spare parts for damp area distributors IP 65

■ Material: Replacement doors - PC smokey Topaz, recyclable

Item No.	Type	Design	Colour	SU	CB	PL
7240060	TS1	Replacement door including hinges	smoked topaz	1	15	960
7290114	APV4T	Replacement door for APV4	smoked topaz	1	12	3.072
7290115	APV6T	Replacement door for APV6	smoked topaz	1	7	2.240
7240059	TS3	Key lock, complete		1	20	8.400





Phase distribution blocks

Phase distribution block 100 A

- Single pin stackable, user-defined
- Connection points:
 - 1 x 2.5–25 mm²
 - 1 x phase track fork M6 or 1 x 1.5–16 mm² (round wire)
 - 3 x 1.5–10 mm² (round wire)
 - 2 x 1.5–25 mm² (round wire)
- Quick mounting possible on DIN rail 35 mm or on mounting plate
- Certified according to DIN VDE EN 60947-7-1

Item No.	Type	Design	Color	SU	CB	PL
7110260	PVB100gr	Phase distribution block 100 A	grey	1	28	1.344



Accessories: Phase track for PVB 100 A

- Cable lug model (for max. screw M6)
- To connect 2 or 3 modules

Item No.	Type	Design	Color	SU	CB	PL
7110263	PVB100B2	Phase rail bridge for PVB 100, 2 modules	grey	20	360	14400
7110264	PVB100B3	Phase rail bridge for PVB 100, 3 modules	grey	20	360	14400

Phase distribution block 125 A

- Single pin stackable, user-defined
- Connection points:
 - 1 x 4–35 mm² (round wire)
 - 1 x phase track fork M6 or 1 x 1.5–16 mm² (round wire)
 - 3 x 1.5–16 mm² (round wire)
 - 2 x 2.5–25 mm² (round wire)
- Quick mounting possible on DIN rail 35 mm or on mounting plate
- Certified according to DIN VDE EN 60947-7-1

Item No.	Type	Design	Color	SU	CB	PL
7110261	PVB125gr	Phase distribution block 125 A	grey	1	28	1.344

Accessories: Phase track for PVB 125A

- Cable lug model (for max. screw M6)
- To connect 2 or 3 modules

Item No.	Type	Design	Color	SU	CB	PL
7110265	PVB125B2	Phase rail bridge for PVB 125, 2 modules	grey	20	360	14.400
7110266	PVB125B3	Phase rail bridge for PVB 125, 3 modules	grey	20	360	14.400

Phase distribution block 160 A

- Single pin stackable, user-defined
- Connection points:
 - 1 x 10–70 mm² (round wire)
 - 1 x flat wire, 15 mm wide, 3–5 mm thick
 - 3 x 25 mm² (round wire)
 - 2 x 35 mm² (round wire)
- Quick mounting possible on DIN rail 35 mm or on mounting plate
- Certified according to DIN VDE EN 60947-7-1

Item No.	Type	Design	Color	SU	CB	PL
7110209	PVB160gr	Phase distribution block 160 A	grey	1	28	1.344



Phase distribution blocks

Phase distribution block 230 A

- Single pin stackable, user-defined
- Connection points:
 - 1 x 16–95 mm² (round wire)
 - 2 x 4–35 mm² (round wire)
 - 8 x 2.5–25 mm² (round wire)
- Quick mounting possible on DIN rail 35 mm or on mounting plate
- Certified according to DIN VDE EN 60947-7-1



Item No.	Type	Design	Color	SU	CB	PL
7110262	PVB230gr	Phase distribution block 230 A	grey	1	18	1.440

Phase distribution block 250 A

- Single pin stackable, user-defined
- Connection points:
 - 1 x 35–120 mm² (round wire)
 - 1 x flat wire, 24 mm wide, 3–5 mm thick
 - 2 x 35 mm² (round wire)
 - 3 x 25 mm² (round wire)
 - 4 x 16 mm² (round wire)
- Quick mounting possible on DIN rail 35 mm or on mounting plate
- Certified according to DIN VDE EN 60947-7-1

Item No.	Type	Design	Color	SU	CB	PL
7110210	PVB250gr	Phase distribution block 250 A	grey	1	18	1.440

Phase distribution block 400 A

- Single pin stackable, user-defined
- Connection points:
 - 1 x 95–185 mm² (round wire)
 - 1 x flat wire, 24 mm wide, 3–5 mm thick
 - 2 x 35 mm² (round wire)
 - 3 x 25 mm² (round wire)
 - 4 x 16 mm² (round wire)
- Quick mounting possible on DIN rail 35 mm or on mounting plate
- Certified according to DIN VDE EN 60947-7-1

Item No.	Type	Design	Color	SU	CB	PL
7110211	PVB400gr	Phase distribution block 400 A	grey	1	18	1.440



Main line branch terminals type C

Main line branch terminals 25 mm²

- Access 2 x 25 mm², exit 2 x 16 mm²
- Connectors certified according to DIN VDE 0603-2
- With snap on attachment for horizontal and also vertical mounting with triple block
- Practical clamping width of 18 mm

Item No.	Type	Design	Color	SU	CB	PL
7110188	HLAK1p25gr	Main line branch terminal, single pin, 25 mm² ("L")	grey	5	60	3.840
7110189	HLAK1p25bl	Main line branch terminal, single pin, 25 mm² ("N")	blue	5	60	3.840
7110190	HLAK1p25gnge	Main line branch terminal, single pin, 25 mm² ("PE")	green, yellow	5	60	3.840
7110191	HLAK1p25br	Main line branch terminal, single pin, 25 mm² ("L")	brown	5	60	3.840
7110192	HLAK1p25sw	Main line branch terminal, single pin, 25 mm² ("L")	black	5	60	3.840

Item No.	Type	Design	Color	SU	CB	PL
7110194	HLAK3p25gr	Main line branch terminal, 3-pin, 25 mm² ("3L")	grey	2	24	1.536

Item No.	Type	Design	Color	SU	CB	PL
7110233	HLAK4p25gr	Main line branch terminal, 4-pin, 25 mm² ("L")	grey	1	12	960
7110234	HLAK4p25grgn	Main line branch terminal, 4-pin, 25 mm² ("L" / "PE")	grey, green	1	12	960
7110235	HLAK4p25grbl	Main line branch terminal, 4-pin, 25 mm² ("L" / "N")	grey, blue	1	12	960

Item No.	Type	Design	Color	SU	CB	PL
7110236	HLAK5p25gr	Main line branch terminal, 5-pin, 25 mm² ("L")	grey	1	12	768
7110237	HLAK5p25grblgn	Main line branch terminal, 5-pin, 25 mm² ("PE", "L" / "N")	grey, blue, green	1	12	768

Main line branch terminals type C

Main line branch terminals 35 mm²

- Access 2 x 35 mm², exit 2 x 25 mm²
- Connectors certified according to DIN VDE 0603-2
- With snap on attachment for horizontal mounting

Item No.	Type	Design	Color	SU	CB	PL
7110195	HLAK1p35gr	Main line branch terminal, single pin, 35 mm ² ("L")	grey	5	60	2.880
7110196	HLAK1p35bl	Main line branch terminal, single pin, 35 mm ² ("N")	blue	5	60	2.880
7110197	HLAK1p35gnge	Main line branch terminal, single pin, 35 mm ² ("PE")	green, yellow	5	60	2.880
7110198	HLAK1p35br	Main line branch terminal, single pin, 35 mm ² ("L")	brown	5	60	2.880
7110199	HLAK1p35sw	Main line branch terminal, single pin, 35 mm ² ("L")	black	5	60	2.880



Main line branch terminals 35 mm²

Double block

- Entry/exit 4 x 35 mm², 4 x 25 mm²
- According to DIN VDE 0603-2
- With snap on attachment for horizontal and vertical mounting

Item No.	Type	Design	Color	SU	CB	PL
7110267	HLAK1p35Dgr	Main line branch terminal, single pin, 35 mm ² /double block ("L")	grey	2	24	1.536
7110268	HLAK1p35Dbl	Main line branch terminal, single pin, 35 mm ² /double block ("N")	blue	2	24	1.536
7110269	HLAK1p35Dgnge	Main line branch terminal, single pin, 35 mm ² /double block ("PE")	green, yellow	2	24	1.536
7110270	HLAK1p35Dbr	Main line branch terminal, single pin, 35 mm ² /double block ("L")	brown	2	24	1.536
7110271	HLAK1p35Dsw	Main line branch terminal, single pin, 35 mm ² /double block ("L")	black	2	24	1.536



Main line branch terminals 70 mm²

- Access 2 x 70 mm², finish 2 x 50 mm²
- Connectors certified according to DIN VDE 0603-2
- With snap on attachment for horizontal mounting

Item No.	Type	Design	Color	SU	CB	PL
7110201	HLAK1p70gr	Main line branch terminal, single pin, 70 mm ² ("L")	grey	3	36	1.728
7110202	HLAK1p70bl	Main line branch terminal, single pin, 70 mm ² ("N")	blue	3	36	1.728
7110203	HLAK1p70gnge	Main line branch terminal, single pin, 70 mm ² ("PE")	green, yellow	3	36	1.728
7110204	HLAK1p70br	Main line branch terminal, single pin, 70 mm ² ("L")	Brown	3	36	1.728
7110205	HLAK1p70sw	Main line branch terminal, single pin, 70 mm ² ("L")	black	3	36	1.728





Main line branch terminals type A

Main line branch terminals 25 mm²

- Access 2 x 25 mm², exit 16 mm²
- Connectors certified according to DIN VDE 0603-2/03.98
- With snap on attachment for horizontal and vertical mounting

Item No.	Type	Design	Color	SU	CB	PL
7110212	HLAK1p25a2	Main line branch terminal, single pin, 2 x 25 mm², 2 x 16 mm²	grey	20	20	4.800
7110213	HLAK1p25a4	Main line branch terminal, single pin, 2 x 25 mm², 4 x 16 mm²	grey	20	20	3.200
7110214	HLAK1p25a6	Main line branch terminal, single pin, 2 x 25 mm², 6 x 16 mm²	grey	10	10	2.800
7110215	HLAK1p25a12	Main line branch terminal, single pin, 2 x 25 mm², 12 x 16 mm²	grey	10	10	1.800

Item No.	Type	Design	Color	SU	CB	PL
7110216	HLAK4p25a4	Main line branch terminal, 4-pin, 2 x 25 mm², 4 x 16 mm²	grey	10	10	1.200

Item No.	Type	Design	Color	SU	CB	PL
7110217	HLAK5p25a2	Main line branch terminal, 5-pin, 2 x 25 mm², 2 x 16 mm²	grey	10	10	1.100

Main line branch terminals 35 mm²

- Access 2 x 35 mm², exit 25 mm²
- Connectors certified according to DIN VDE 0603-2/03.98
- With snap on attachment for horizontal and vertical mounting

Item No.	Type	Design	Color	SU	CB	PL
7110218	HLAK1p35a2	Main line branch terminal, single pin, 2 x 35 mm², 2 x 25 mm²	grey	20	20	3.200



N/PE screw terminals

Item No.	Type	Design	SU	CB	PL
7510001	N15S	N screw terminal for 3 x 16 mm², 12 x 10 mm² connection	5	25	3.600
7510002	N8S	N screw terminal for 3 x 16 mm², 5 x 10 mm² connection	5	25	5.400
7510004	PE15S	PE screw terminal for 3 x 16 mm², 12 x 10 mm² connection	5	25	3.600
7510005	PE8S	PE screw terminal for 3 x 16 mm², 5 x 10 mm² connection	5	25	5.400
9910006	N3S	N screw terminal for 2 x 16 mm², 1 x 10 mm² connection	5	25	8.400
9910008	PE3S	PE screw terminal 2 x 16 mm², 1 x 10 mm² connection	5	25	8.400



Sub-distribution blocks

- 100 A
- Single pin stackable, user-defined
- 2 Supply terminal units 2.5-25 mm²
- 6 Distribution terminal units 1.5-10 mm²
- Quick mounting on DIN rail 35 mm according to EN 60715, single pin horizontal
- Multiple pin (min. 2 piece), block combinations, horizontal and vertical mounting possible
- Certified according to DIN VDE EN 60998-1 / 60998-2-1



Item No.	Type	Design	Color	SU	CB	PL
7110206	UVB100gr	Sub-distribution block, single pin, 2 x 25 mm ² , + 6 x 10 mm ²	grey	3	42	2.688
7110207	UVB100bl	Sub-distribution block, single pin, 2 x 25 mm ² , + 6 x 10 mm ²	blue	3	42	2.688
7110208	UVB100gnge	Sub-distribution block, single pin, 2 x 25 mm ² , + 6 x 10 mm ²	green, yellow	3	42	2.688

Cable busholder alligator clip

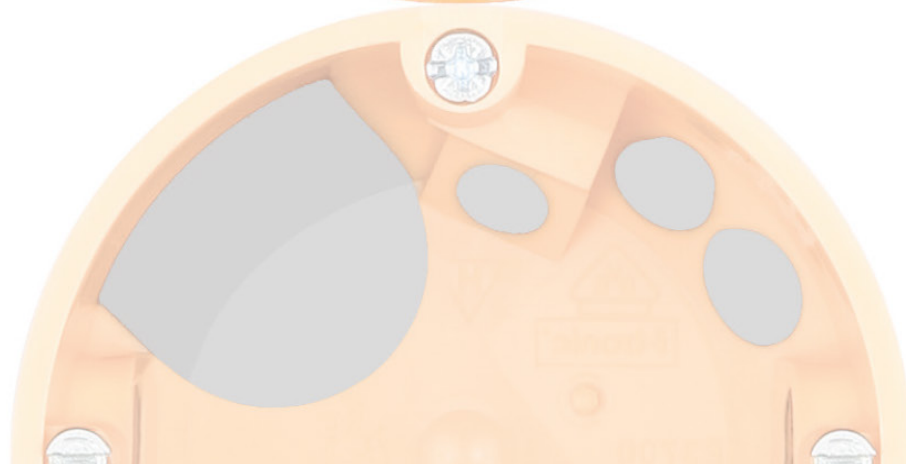
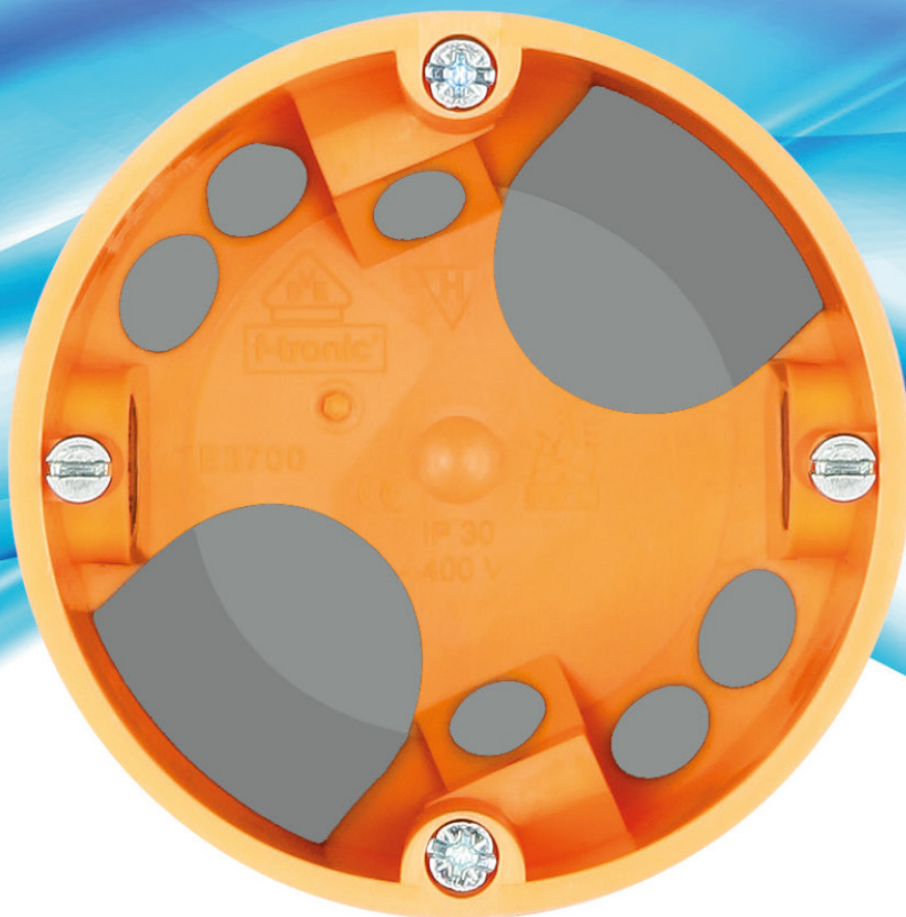
Connection: 2 x 16 mm² (isolated) for flat copper 3-10 mm thick

- Single pin stackable, user-defined
- 2 outlets 1.5 mm-16 mm²
- Round wire Cu (single-wire and stranded wire)
- 1-10 mm² fine wired with wire end



Item No.	Type	Design	Color	SU	CB	PL
7110219	SSAK16	Bus bar crocodile clip 2 x 16 mm ²	grey	12	96	4.608

Installing innovation!



Socket boxes

Diversity can't be beaten

f-tronic offers a wide range of installation material for every installation requirement. No matter whether flush mount, cavity wall, surface-mounted, IP 54 or IP 65-application - we have the right product for you. In 2004, we were a pioneer, bringing the first wind-proof box on the market.

Due to a variety of switches, sockets and intelligent, decentralized building control, you can today install more than 80 wall or flush-mounted boxes. This trend will continue further in the future. A complete installation with the wind-proof boxes from f-tronic guarantees the constructor sustainable increase in energy efficiency and brings comfort by avoiding draft. Wherever you need to avoid disruptive circulating air in your electrical installation, our windproof flush mounted and cavity wall socket boxes with puncture membrane are the first choice.

A cost-efficient installation is possible with our standard flush mount and cavity wall socket boxes. This group of products is rounded off by flush mounted junction boxes and accessories such as spring cover, signal cover and plaster compensating rings.

Benefit from our high manufacturing quality and many f-tronic extras in the IP 54 and IP 65 products. Patented and unique. The IP 54 junction box with puncture membrane and captive, fed cover.

Socket boxes.....37

Flush mounted installation, windproof.....	39
Flush mount installation	40
Flush mount installation solid	42
Flush mount installation accessories	43
Cavity wall installation, windproof.....	47
Cavity wall installation.....	49
Cavity wall installation solid	51
Cavity wall installation accessories	53
Built-in light housing.....	57
Damp area installation	59
Trunking boxes / surface-mounted installation.....	61
Concrete installation	63
Multi function box	83



The electronics box in a windproof design allows, for example, convenient installation of electronic components and provides enough space to comply with the bending radius during laying of data lines.



The new cavity wall electronics box provides a lateral connection compartment with fast and clean single-hole mounting.



Windproof flush-mounted socket boxes, screw spacing 60 mm, with soft-entry membranes

- Guaranteed windproof thanks to 2-component insertion
- Easy to install
- Easy handling without additional tools
- Guaranteed standard combination distance
- 20 or 25 mm pipe connection
- Can be combined with attachable nail tabs E104
- Material: PP, TPE, recyclable

Item No.	Type	Design	Depth (mm)	Colour	SU	CB	PL
7320026	E1062K	Socket box with 25 mm pipe connection, with 4 screw domes	46	black	25	300	6.000
7320028	E1072K	Socket box with 25 mm pipe connection, with 4 screw domes	62	black	25	200	4.000



Electronic windproof socket boxes with soft entry membrane

- For installation in EIB modules, relays or LV transformers up to 48 mm building height
- Windproof thanks to 2-component insertion
- Easy to install – simple handling without additional tools
- Can be converted into a 2-way socket box by means of 12 mm plaster adjustment ring
- Can be expanded thanks to standard combination distance
- M20 or M25 pipe connections
- Material: PP, TPE, recyclable

Item No.	Type	Design	Depth (mm)	Colour	SU	CB	PL
7320009	E550	Electronic socket box with 25 mm pipe connection, with 4 screw domes and 2 device screws	67	black	10	80	1.600



Plug connections with press-out membrane, windproof

- Ingenious, simple and reliable
- Windproof, and suitable for retrofitting
- For all flexible insulation pipes
- Essential item in any service vehicle
- Material: TPE, recyclable

Item No.	Type	Design	Colour	SU	CB	PL
9930014	E06	for pipes with external diameter of 16 mm (inside diameter 11 mm)	grey	50	6.000	192.000
9930015	E07	for pipes with external diameter of 20 mm (inside diameter 15 mm)	grey	50	5.000	100.000
9930016	E08	for pipes with external diameter of 25 mm (inside diameter 19.5 mm)	grey	50	4.500	90.000
9930017	E09	for pipes with external diameter of 32 mm (inside diameter 25 mm)	grey	50	1.500	24.000
9930018	E10	for pipes with external diameter of 40 mm (inside diameter 31.5 mm)	grey	50	1.000	24.000

Flush-mounted socket boxes, screw spacing 60 mm, with 25 mm tube insertion

- 20 and 25 mm tube insertion
- 4 screw domes
- Can be combined with attachable nail tabs E104
- Material: PS, recyclable

Item No.	Type	Design	Depth (mm)	Colour	SU	CB	PL
7310129	E106M25	Socket box	45	black	25	300	6.000
7310130	E106M25S	Socket box with pre-assembled fitting screws	45	black	25	300	6.000
7310131	E107M25	Socket box	65	black	25	200	4.000
7310132	E107M25S	Socket box with fitting screws	65	black	25	200	4.000



Flush-mount junction box diameter 72 mm, 35 mm deep

- Material: PS, recyclable

Item No.	Type	Design	Colour	SU	CB	PL
7310133	E110	with 11 cable and leading-in tubes	black	25	300	6.000
7390022	E112H	Screw cap for junction box E110	white	50	1.000	32.000



Flush-mount accessory junction boxes with lateral terminal chambers

- Material: PS, recyclable

Item No.	Type	Design	H x W x D (mm)	Colour	SU	CB	PL
7310063	E510	with 2 device screws 15 mm and pipe sockets 25 mm	110 x 71 x 45	black	10	100	2.000



Flush-mounted junction boxes

For clearly arranged wiring with option of circuit separation.
The size of 150 x 150 mm is suitable for retrofitting of 35 mm standard top hat rails or terminals.

- With pre-stamped push-out openings up to 38 mm
- Including cover screws and cover in white
- Material: PS, recyclable

Item No.	Type	Design	Depth (mm)	Colour	SU	CB	PL
7310060	E140	80 x 80 mm, Unmounted	80 x 80 x 50	grey	10	200	4.000
7310061	E141	100 x 100 mm, Unmounted	100 x 100 x 50	grey	10	150	3.000
7310062	E142	150 x 150 mm, Unmounted	150 x 150 x 60	grey	10	30	600

Flush-mounted wall outlet boxes

- For VDE approved installations of cable outlets
- With integral plug for attachment of wall lamps
- Integral pre-stamped push-out openings for cables and pipes
- Including cover
- Material: PS, recyclable

Item No.	Type	Design	Depth (mm)	Colour	SU	CB	PL
7310077	WAD	Including cover	60 x 31 x 31	white	25	500	10.000

Flush-mounted socket boxes screw spacing 60 mm, for Austria

The standard wall boxes E810 and E811 are tested according to EN60670 by the ÖVE and have plenty of product benefits. Cables and pipes can be inserted from the side and from behind up to a diameter of 20 mm. The boxes bear self-centering thanks to the distance piece in the borehole and provide a better fixing of the switch in the boxes thanks to the ribs inside. Both models can be strung together allowing the mounting of pre-assembled unit combinations.

- Leading-in tubes up to 20 mm
- Installation of pre-assembled combinations possible
- Any combination
- Material: PS, type E122 PE, recyclable

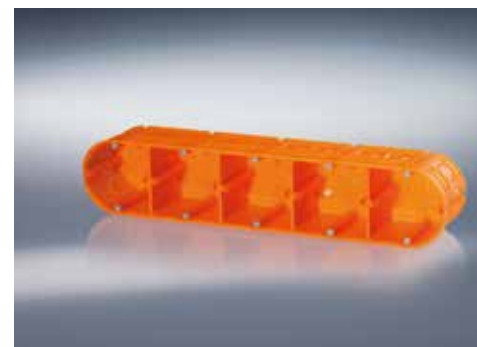
Item No.	Type	Design	Depth (mm)	Colour	SU	CB	PL
7310064	E810	Flush-mount standard socket box	45	black	25	200	4.000
7310066	E811	Flush-mount standard socket box - doubled execution	45	black	10	100	2.000
7390027	E122	Signal cover 70 mm, for UP socket box Austria	k.A.	red	50	1,000	20.000

Flush-mounted installation solid

Multiple flush-mounted socket boxes, solid

Our solid multiple flush-mounted boxes are equipped with variable baffles that allow for a flexible installation. The push-out openings facilitate inserting cables. Depending on model, they are delivered with 4, 6, 8 or 10 fitting screws.

- Extremely solid material, high wall thickness
- Flexible installation thanks to variable baffles
- The push-out openings for easy insertion of cables
- For 4 and 5-way designs, additional push-out openings on sides for cable channels or pipes up to 16 mm diameter.
- Material: PP, recyclable



Item No.	Type	Design	Depth (mm)	Colour	SU	CB	PL
7310102	UP20	Flush-mounted socket box, solid, 2-way, 2 x screw spacing 60 mm	63	orange	10	90	1.800
7310103	UP30	Flush-mounted socket box, solid, 3-way, 3 x screw spacing 60 mm	63	orange	5	50	2.000
7310104	UP40	Flush-mounted socket box, solid, 4-way, 4 x screw spacing 60 mm	63	orange	5	40	800
7310105	UP50	Flush-mounted socket box, solid, 5-way, 5 x screw spacing 60 mm	63	orange	5	35	700

Accessories for multiple flush-mounted socket boxes

- Semi-circular or square flush-mounted covers allow for the covering of the complete connection space of the multiple box and protect the inside of the socket box during plastering.
- Optional covering of the outer spaces of the socket box instead of a junction box with additional connection space
- Material: PP, recyclable



Item No.	Type	Design	Colour	SU	CB	PL
7390055	UPD1	Flush-mounted cover semi-circle for multiple flush-mounted socket boxes	orange	50	1.000	20.000
7390056	UPD2	Flush-mounted cover, square for multiple flush-mounted socket boxes	orange	50	1.000	20.000



Plaster compensating rings

- To compensate deep-seated accessory and junction boxes
- With pre-assembled device screws length 15 mm
- Plaster compensating rings with the same diameter can be mounted together
- Material: PS, recyclable

Item No.	Type	Design	Depth	Color	SU	CB	PL
7390028	E130	For socket boxes Screw spacing 60 mm	12	red	50	1.200	24.000
7390032	E131	For junction boxes Screw spacing 70 mm	12	red	50	1.000	20.000
7390033	E132	For socket boxes Screw spacing 60 mm	24	red	50	500	10.000
7390035	E133	For junction boxes Screw spacing 70 mm	24	red	50	400	8.000



Signal cover

- For a simple locating of accessory and junction boxes after plastering
- Reusable
- Protects the inside of boxes, the screw domes and the screw heads during plastering
- Material: PE, LD, recyclable

Item No.	Type	Design	Color	SU	CB	PL
7390024	E120	For socket boxes screw spacing 60 mm	red	50	1.500	30.000
7390026	E121	For junction box screw distance 70 mm	red	50	1.000	20.000



Universal screw cap

- For VDE-compliant covering of accessory and junction boxes.
- Diameter 92 mm for socket boxes screw spacing 60 mm and junction boxes type E110
- With 5 pre-shaped screw holes for double and single screw fixing
- Including 2 fixing screws (15 mm)
- Material: PS, recyclable

Item No.	Type	Design	Color	SU	CB	PL
7390022	E112H	Suitable for all accessory - and junction boxes screw spacing 60 and 70 mm, Including 2 screws	white	50	1.000	32.000

Nail straps for inserting

Thanks to the newly developed attachable nail straps, f-tronic is setting new standards in flexibility in installation technology for flush mount installation. You only need the nail tag for attaching which can be combined with every flush mount box from our range thanks to their unique plug-in system. Save double storing and gain flexibility for your projects.

- Suitable for flush-mounting boxes, junction boxes:
E106M25, E107M25, E1062K, E1072K
- Material: PS, recyclable

Item No.	Type	Design	Color	SU	CB	PL
7390069	E104	Nail straps for inserting	red	50	1.000	48.000



Application example



Spring covers

- Sturdy, impact-resistant plastic design
- Wide fitting springs
- With slanted edge of the cover for a clean finish against the wall
- Material: PS, recyclable

Item No.	Type	Design	Color	SU	CB	PL
7390016	E109A	For socket boxes screw spacing 60 mm	white	50	1.000	20.000
7390015	E109	For junction boxes screw spacing 70 mm	white	50	800	16.000



Device screws

Item No.	Type	Design	SU	CB	PL
9920005	E152/15	Slotted screw 3.2 x 15 mm	100	20.000	480.000
9920007	E152/25	Slotted screw 3.2 x 25 mm	100	15.000	360.000
9920009	E152/40	Slotted screw 3.2 x 40 mm	100	10.000	240.000



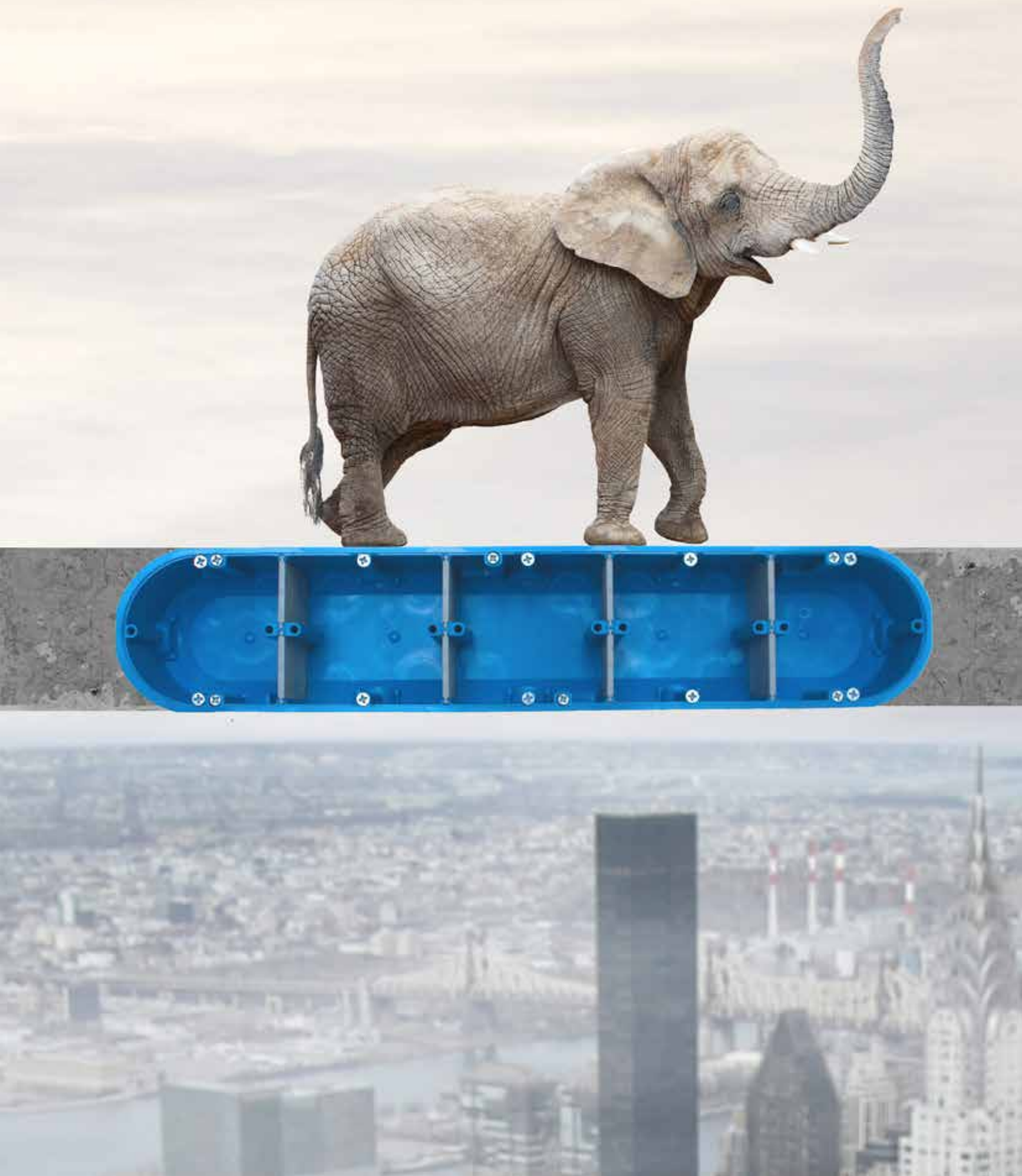
Line retrieval device SEG50

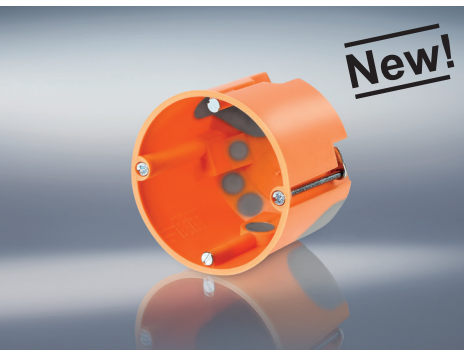
The handy device for blowing or pulling a cord during installation in residential, commercial and industrial buildings. Can be used to move several hundred meters of cord also for kinked tubes or Flexpipe.

- Suitable for pipe inner diameter from 16 to 50 mm.
- Delivery in a practical case with accessories
- For inner tube diameter 16 - 50 mm
- Up to 300 m length
- For kinked pipe and Flexpipe
- Dual function for blowing and sucking

Item No.	Type	Design	SU	CB	PL
7390071	SEG50	Line retrieval device with accessories in case	1	1	20
7390072	SEG-ES51	Replacement cord, 900 m length, tension force 24 kg	10	10	84

The solid solution!





Cavity wall socket boxes with press-out membrane, windproof

The cavity wall boxes with press-out membrane are guaranteed windproof and quickly installed. Cables or pipes can be pushed without additional tools through the membranes which decreases your normal working time.

Thanks to the new development of our guaranteed windproof cavity wall boxes with press-out membrane, you only need two boxes in your range of products instead of three, which thus saves valuable storage space. The new E2700 replaces the E2000 and the new E3700 replaces the E3500 and the E4000. All boxes now have 2 x M25 leading-in tubes and a variety of other leading-in points with optimized cable retention. Of course, all models of this series are VDE certified.

- Guaranteed windproof
- Sustainably increases energy efficiency in buildings
- Creates more comfort by preventing drafts
- Easy to install
- Easy handling without additional tools
- Milling hole diameter 68 mm
- 4 cable entries: (2 x) M25, (2 x) 3 x 1.5 mm², (2 x) 3 x 2.5 mm² - 5 x 1.5 mm²
- including windproof connection socket E105
- E3700 also has 2 more cable glands for 7 x 1.5 mm² or 5 x 2.5 mm²
- Material: PP, TPE, recyclable

Item No.	Type	Design	Deep box (mm)	Color	SU	CB	PL
7360028	E2700	Socket box	47	orange	25	300	6.000
7360027	E3700	Equipment connection socket	61	orange	25	400	4.800



Cavity wall junction box with press-out membrane, Windproof

- Guaranteed windproof
- Sustainably increases energy efficiency in buildings
- Creates more comfort by preventing drafts
- Easy to install
- Easy handling without additional tools
- Milling hole diameter 120 mm
- Including cover, white
- Material: PP, TPE, recyclable

Item No.	Type	Design	Diameter (mm)	Color	SU	CB	PL
7360016	E816	including cover	120	orange	20	20	1.280

Plug connections with press-out membrane, windproof

- Brilliant, easy, reliable
- Wind-proof and can be retrofitted
- For all flexible insulated pipes
- No service vehicle can be without it
- Material: TPE, recyclable

Item No.	Type	Design	Color	SU	CB	PL
9930014	E06	For tubes with outer diameter of 16 mm (Inside diameter 11 mm)	grey	50	6.000	192.000
9930015	E07	For tubes with outer diameter of 20 mm (Inside diameter 15 mm)	grey	50	5.000	100.000
9930016	E08	For tubes with outer diameter of 25 mm (Inside diameter 19.5 mm)	grey	50	4.500	96.000
9930017	E09	For tubes with outer diameter of 32 mm (Inside diameter 25 mm)	grey	50	1.500	24.000
9930018	E10	For tubes with outer diameter of 40 mm (Inside diameter 31.5 mm)	grey	50	1.000	24.000



Connection socket, windproof

- For wind-proof through wiring in box combinations
- Material: PP, recyclable

Item No.	Type	Design	Color	SU	CB	PL
7390075	E105	Connecting socket For windproof cavity wall boxes	orange	25	500	160.000





Cavity wall junction box

- Milling hole diameter 74 mm
- Delivery includes screw cap E112H
- Material: PP, recyclable

Item No.	Type	Design	Deep box (mm)	Color	SU	CB	PL
7350043	E119	Includes screw cap	50	orange	10	200	4.000



Cavity wall junction box

- Delivery includes screw cap 104 x 104 mm, white
- Material: PP, recyclable

Item No.	Type	Design	Color	SU	CB	PL
7350033	E116	Includes screw cap, 104 x 104 mm	orange	1	80	1.600



Cavity wall junction box

- Milling hole diameter 120 mm
- Including cover, white
- Material: PP, recyclable

Item No.	Type	Design	Color	SU	CB	PL
7350046	E815	Includes screw cap	orange	20	20	1.280



Cavity wall cable outlet

- Milling hole diameter 35 mm
- Including cover, white
- Material: PP, recyclable

Item No.	Type	Design	Deep box (mm)	Color	SU	CB	PL
7350098	E134	including cover	45	orange	25	500	10.000

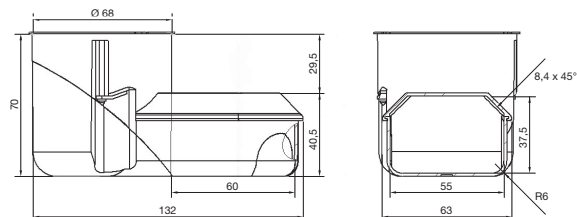
Cavity wall installation

Cavity wall electronics box

Technology that inspires! With the new electronics box, new standards are set in your Cavity wall installation. It couldn't be faster! Thanks to single-hole mounting, install quickly and easily and enjoy all benefits of a double socket. Thus you have enough space for complying with the bending radius, especially in the transfer of data lines or can install electronic components in a side tunnel.

- 70% time saving during assembly
- Single-hole mounting
- Lateral connection space for all commonly used relays and actuators
- Easy compliance with the bending radius for network cables
- Material: PP, TPE, recyclable

Item No.	Type	Design	Color	SU	CB	PL
7350066	E5000	Cavity wall electronics box	orange	10	100	2.000



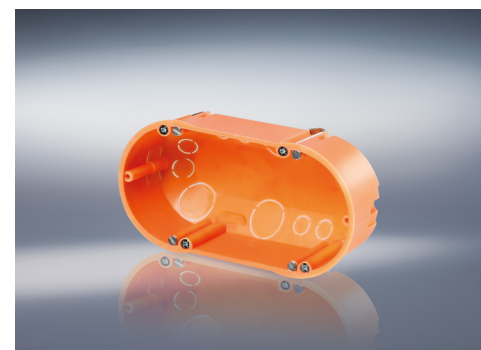
Video

Cavity wall socket boxes

The proven design with metal claw fasteners for cost-efficient installation in cavity walls.

- With pre-assembled device screws
- With breakout openings for wires and pipes
- Milling hole diameter 68 mm
- Material: PP, recyclable

Item No.	Type	Design	Deep box (mm)	Color	SU	CB	PL
7350099	E135	Socket box without VDE	35	orange	25	300	6.000
7350094	E115	Socket box	47	orange	25	300	6.000
7350096	E117	Equipment connection socket	61	orange	25	400	4.800
7350041	E118	Doubled socket box	47	orange	10	100	2.000

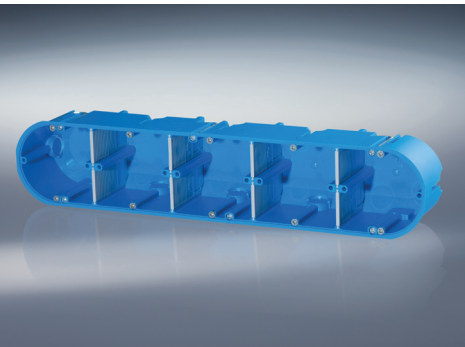


Halogen-free cavity wall socket boxes

- Milling hole diameter 68 mm
- Material: PP, recyclable

Item No.	Type	Design	Deep box (mm)	Color	SU	CB	PL
7350095	E115HF	Socket box	47	white	25	300	6.000
7350097	E117HF	Equipment connection socket	61	white	25	400	4.800





* suitable for frame width 85 mm.
For smaller frame size there is
a gap in the intermediate area

Multiple cavity wall socket boxes, solid

Our solid multiple cavity wall socket boxes are equipped with variable dividers which allow for a flexible installation. The breakout openings enable simple insertion of cables. Depending on the version, you are supplied with 4, 6, 8, or 10 device screws.

- Extremely solid material, high wall thickness
- Flexible installation thanks to variable dividers
- With breakout openings for easy insertion of cables
- For 4 and 5-way designs, additional push-out openings on sides for cable channels or pipes up to 16 mm diameter.
- Flame retardant up to 960° C
- Material: PA6, recyclable

Item No.	Type	Design	Deep box (mm)	Color	SU	CB	PL
7350061	HW10	Solid cavity wall socket box, single, milling hole 68 mm	60	blue	20	240	4.800
7350062	HW20	Solid cavity wall socket box, double, milling hole 68 mm	60	blue	10	90	1.800
7350063	HW30	Solid cavity wall socket box, triple, milling hole 68 mm	60	blue	5	50	1.000
7350064	HW40	Solid cavity wall socket box, four-way, milling hole 68 mm	60	blue	5	40	800
7350065	HW50	Solid cavity wall socket box, five-way, milling hole 68 mm	60	blue	5	35	700
7350093	HW60	Solid cavity wall socket box, six-way, milling hole 68 mm	60	blue	1	30	600



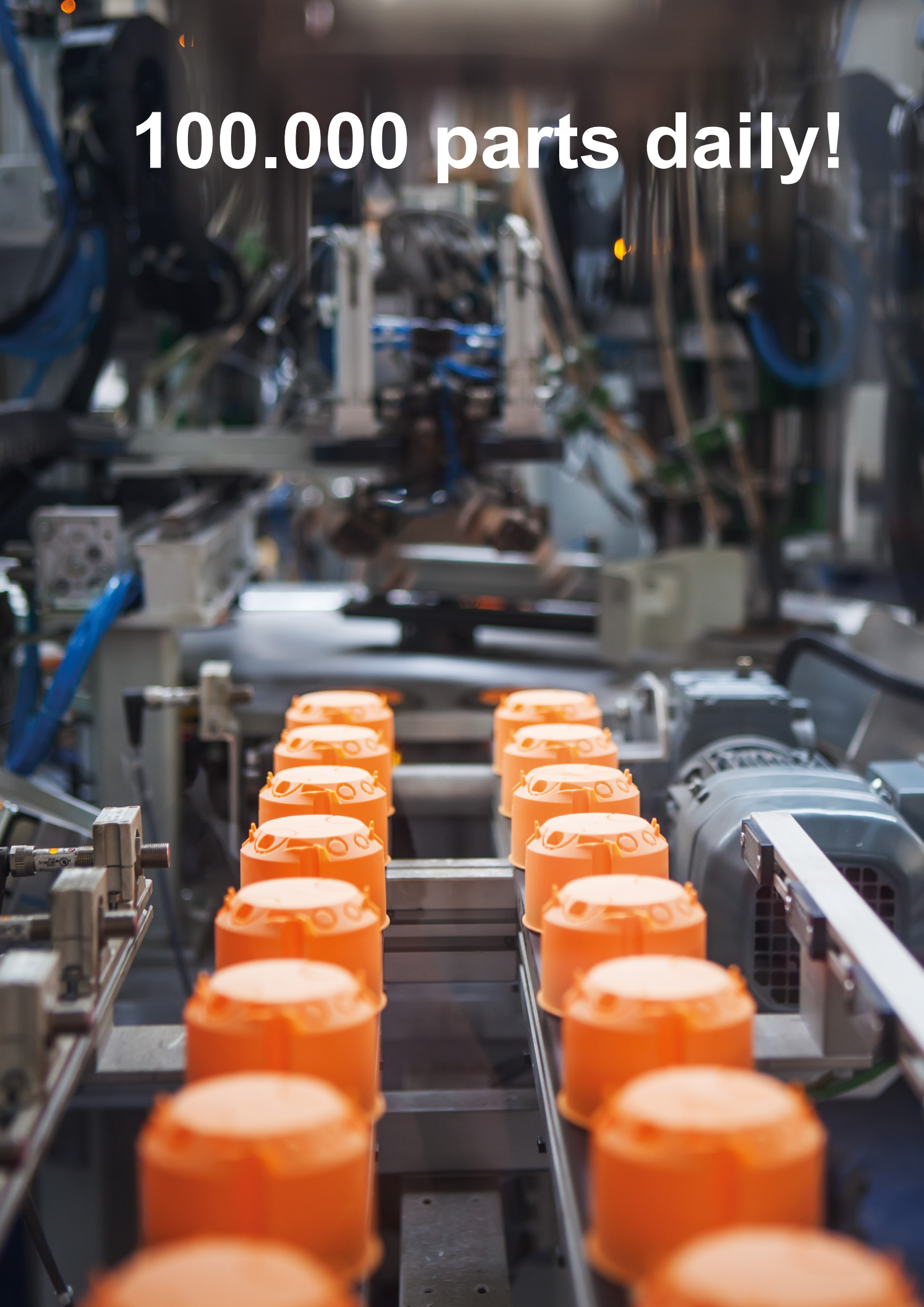
Accessories multiple cavity wall boxes

- Semi-circular or square cover allows covering the complete connection area of the multiple socket.
- Flush final cover with the box rim
- Suitable for separate covering of a part area of the box so the second area can therefore be utilised as additional installation space
- Flame retardant up to 950° C
- Material: PP, recyclable

Item No.	Type	Design	Color	SU	CB	PL
7390057	HWD1	Half round lid For multiple cavity wall socket boxes	white	50	1.000	48.000
7390058	HWD2	Cap square For multiple cavity wall socket boxes	white	50	1.000	48.000



100.000 parts daily!

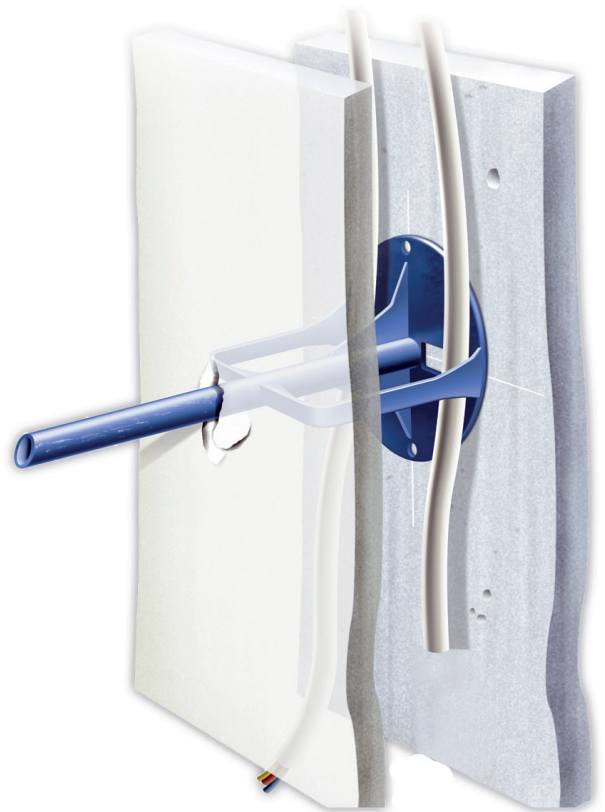


Pipe brackets

The self adhesive pipe bracket and plunger allows you to quickly find the cables in lightweight walls. The dry wall builder knocks out a hole with a hammer and lets the central spike get through, this serves as a centre for the drill bit. Speedy milling without re-measuring the mounting locations is therefore guaranteed.

Advantages at a glance

- Safe location of pipes with closed wall
- Centering the hole to fit the installation boxes
- No unnecessary removal of insulating material
- No injuries through pool tests of cavity wall, C profiles and insulation materials
- Enormous time and cost savings
- In combinations, only one plunger must be affixed, the other boxes can be drilled out using the drill template



Pipe brackets

- Material: PP, recyclable

Item No.	Type	Design	SU	CB	PL
7390049	HWLT1	Pipe brackets including adhesive disk	50	50	5.600
7390048	BOS2	Drilling template for cavity wall box with plastic sleeve	1	42	840
7390074	KDKS	Adhesive disk	25	500	56.000



Video

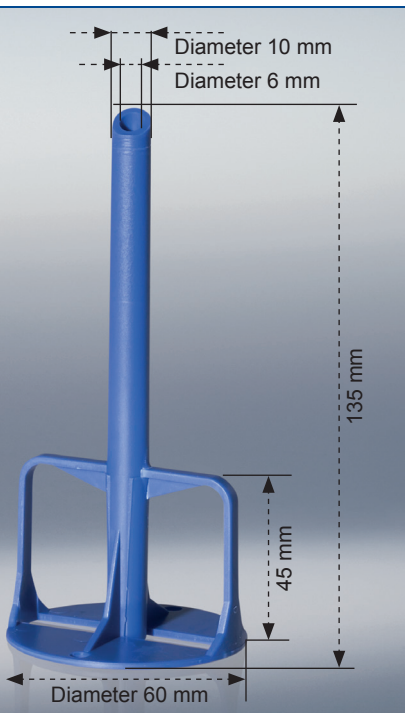
Drilling template

For cavity wall boxes

- Straight and precise
- Faster and more accurate work
- Also five-way combinations are possible



Adhesive disk
For pipe bracket

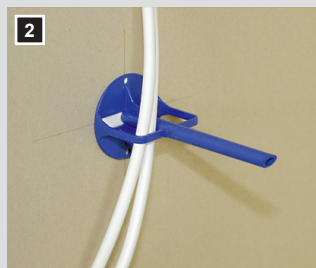


Drilling template
Ideal accessory for a pipe bracket

Huge time savings - no more searching for pipes



1 Glue the pipe bracket on the back of the first cladding.



2 Pull through the cables or pipes. (You will be amazed about the enormous holding capacity of the adhesive disk).



3 The dry wall builder knocks out a hole with a hammer and lets the central spike get through, this serves as a centre for the drill bit.



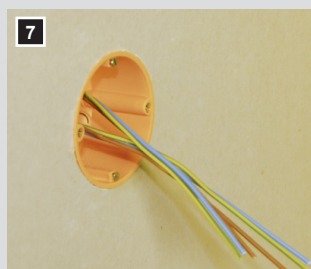
4 You can mill the hole without re-measuring the mounting location.



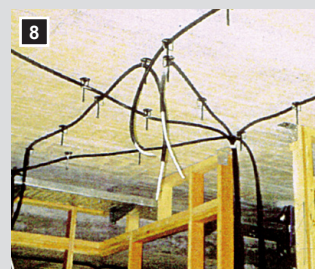
5 Draw pipe brackets and pipes out of the wall.



6 Without a long time searching for cables, you can install the cavity wall box.

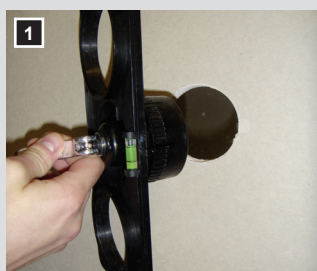


7 Finished installation - simple and quick.



8 Can be used also as collection holder in suspended ceilings. Without drilling, simply stick and you're done.

Huge time savings - no more searching for pipes



1 Drilling a central hole



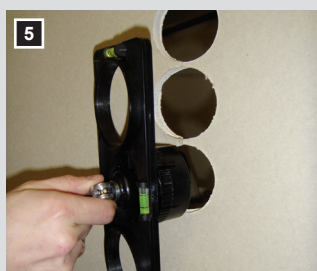
2 Precise alignment with the integrated bubble level.



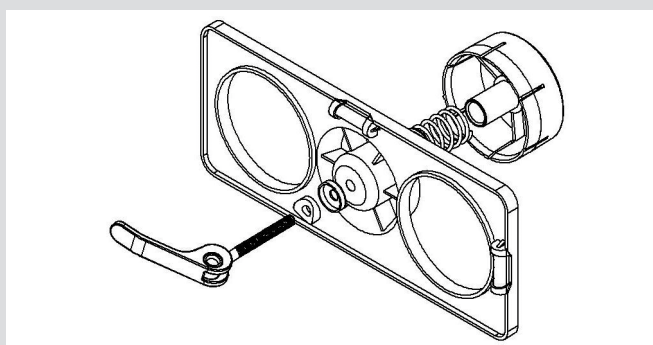
3 Then drill through the existing hole inserts.



4 Attach the drilling template with the tensioner.



5 Inserting the template.



Installing a cavity wall box with the mounting aid/drilling template

Mounting aid for 68 mm cavity wall boxes combinations with a hole saw.

A must for all those who want to install electric cavity wall boxes in wood walls, plasterboard or other cavity walls!



Universal screw cap

- For VDE-compliant covering of devices - and junction boxes.
- Diameter 92 mm for socket boxes screw spacing 60 mm and junction boxes type E110
- With 5 pre-shaped screw holes for double and single screw fixing
- Including 2 fixing screws (15 mm)
- Material: PS, recyclable

Item No.	Type	Design	Color	SU	CB	PL
7390022	E112H	Suitable for all accessory - and junction boxes screw spacing 60 and 70 mm, Including 2 screws	white	50	1.000	32.000



Spring Cover

- Sturdy, impact-resistant plastic design
- Wide fitting springs
- With slanted edge of the cover for a clean finish against the wall
- Material: PS, recyclable

Item No.	Type	Design	Color	SU	CB	PL
7390016	E109A	For socket boxes diameter 60 mm	white	50	1.000	20.000
7390015	E109	For junction boxes diameter 70 mm	white	50	800	16.000



Device screws

Item No.	Type	Design	SU	CB	PL
9920005	E152/15	Slotted screw 3.2 x 15 mm	100	20.000	480.000
9920007	E152/25	Slotted screw 3.2 x 25 mm	100	15.000	360.000
9920009	E152/40	Slotted screw 3.2 x 40 mm	100	10.000	240.000



Memofix

MEMOFIX is the new way of working.

Search for a pipe, then annoyingly tinker around to get it out of the wall, repair the wall and home drive exasperated? Put the wire clip aside and test MEMOFIX!

With MEMOFIX unerringly find your cables laid into dry walls.

Save the annoying searching and save time and money.

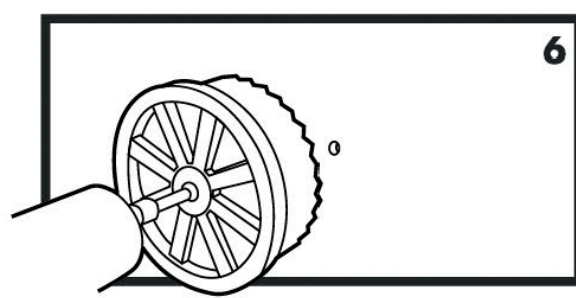
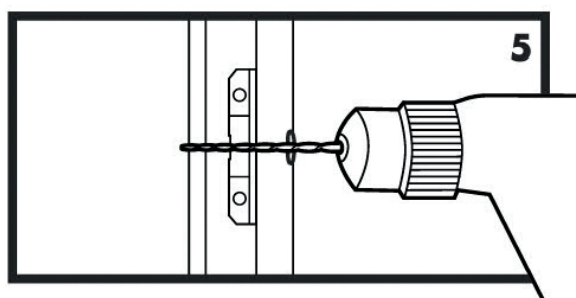
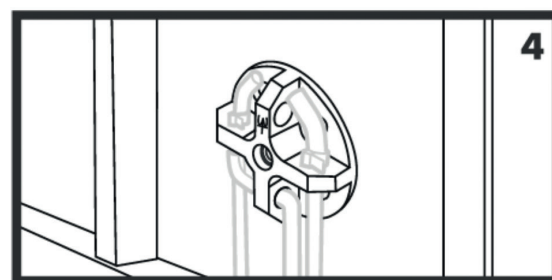
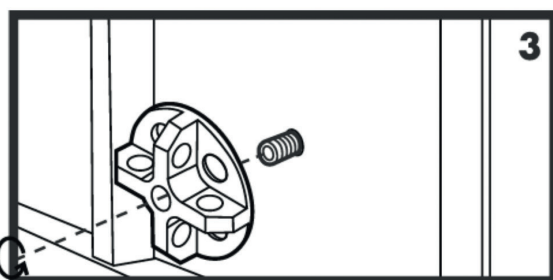
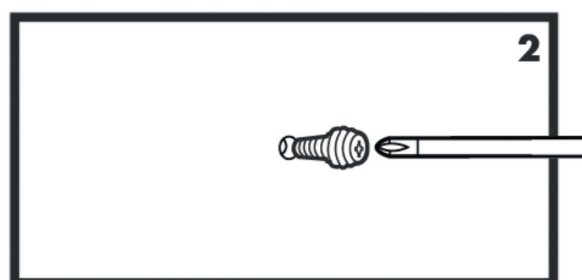
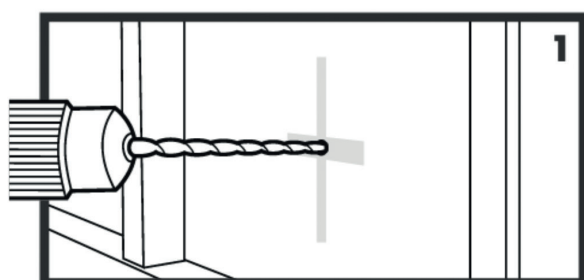
No more cable waste and no nasty surprises.

You can no longer imagine having worked without MEMOFIX.



Video

Item No.	Type	Design	SU	CB	PL
7390076	MFX	Mounting aid for cavity wall boxes	10	200	5.400





Built-in light housing

The built-in light housings are used for shielding the built-in spotlight from dust, insects and all possible materials which come into contact in the cavity with the rear of the built-in spotlight and thus can lead to fire in the building. All built-in housings are made of silicone.

- Suitable for halogen built-in spotlights
- Ceiling cut-out diameter 68 mm or 75 mm
- Installation depth 70 mm
- Outlet opening diameter 66 mm or 73 mm
- Built-in light height max. 67 mm
- 2 lateral flaps for spring clip, length 50 mm, width 26 mm
- For bulbs up to 35 W
- No cool beam bulb
- Material: Silicone

Item No.	Type	Design	Box depth (mm)	SU	CB	PL
7380001	LEG1	Built-in light housing Outer diameter 68 mm	70	10	340	2.720
7380002	LEG2	Built-in light housing Outer diameter 75 mm	70	10	300	2.400



Built-in light housing - high voltage

- Suitable for high-voltage - halogen built-in spotlights
- Ceiling cut-out diameter 68 mm
- Installation depth 100 mm
- Outlet opening diameter 66 mm
- Built-in light height max. 90 mm
- 2 lateral flaps for spring clip, length 50 mm, width 26 mm
- Suitable for LED, energy saving bulb
- For bulbs up to 35 W
- No cool beam bulb
- Material: Silicone

Item No.	Type	Design	Box depth (mm)	SU	CB	PL
7380003	LEG-H3	Built-in light housing for high-voltage halogen built-in spotlights outer diameter 68 mm	100	10	300	2.400

Built-in light housing, windproof



Built-in light housing - windproof

The built-in lighting housing - windproof has quick mounting technology without the use of springs. The circumferential sealing ribs are used for installation gearing. The housing is suitable for installation in brittle materials such as plasterboard, insulation and fibre boards.

- Completely windproof
- Quick mounting technology
- Ceiling cut-out diameter 68 mm
- Inner diameter 60 mm
- Built-in light height low-voltage max. 65 mm
- No cool - beam bulb
- Bulb up to 35 W with aluminium reflector
- Material: Silicone



Item No.	Type	Design	Box depth (mm)	SU	CB	PL
7380004	LEG-WD4	Built-in light housing - windproof Outer diameter 68 mm	65	10	300	2.400

Lights spacer

The lights spacer keeps damp-proof foil and insulation wool apart from hot bulbs and prolongs the life of the bulb.

- Suitable for low and high voltage built-in spotlights
- Installation opening 60-82 mm
- Installation depth 75 mm
- Material: PA6, recyclable



Item No.	Type	Design	Box depth (mm)	SU	CB	PL
7380005	LEAH1	Lights spacer b = 60-82 mm	75	25	100	7.200



Damp area junction boxes IP 54

- High ease of installation
- With up to 12 self-sealing cut cable glands
For cables up to 5 x 2.5 mm²
- Cover made of polypropylene, polyethylene base
ensure subsequent alignment
- Material: Housing PE, Cover PP, recyclable

Item No..	Type	Design	Colour	SU	CB	PL
7340141	E126	75 x 37 x 40 mm	grey	10	300	6.000
7340139	E125	75 x 75 x 40 mm	grey	10	200	4.000
7340038	E113	85 x 85 x 40 mm	grey	10	150	3.000
7340044	E114	100 x 100 x 40 mm	grey	10	100	2.000
7340058	E126W	75 x 37 x 40 mm	white	10	300	6.000
7340142	E126K	75 x 37 x 40 mm, with 5-pin terminal	grey	10	300	6.000
7340140	E125K	75 x 75 x 40 mm, with 5-pin terminal	grey	10	200	4.000
7340111	E113R	85 x 85 x 40 mm	red	10	150	3.000
7340110	E113GN	85 x 85 x 40 mm	green	10	150	3.000
7340043	E113W	85 x 85 x 40 mm	white	10	150	3.000
7340134	E113S	85 x 85 x 40 mm	black	10	150	3.000



Damp area junction boxes IP 54 with soft-entry membranes

- Easy to install
- Easy handling – use of expensive tools not required
- With integrated soft-entry membrane on all four sides
- Membrane openings on the back for cables up to 5 x 2.5 mm
- Cover is secure from loss
- VDE certified colors grey/white
- Material: PP, recyclable

Item No..	Type	Design	Colour	SU	CB	PL
7340138	E1000	75 x 75 x 40 mm	grey/white	10	160	3.200
7340034	E1100	85 x 85 x 45 mm	grey/white	10	120	2.400
7340033	E1000W	75 x 75 x 40 mm	white	10	160	3.200
7340112	E1100R	85 x 85 x 45 mm	red	10	120	2.400
7340113	E1100GN	85 x 85 x 45 mm	green	10	120	2.400
7340037	E1100W	85 x 85 x 45 mm	white	10	120	2.400

Damp area junction boxes IP 65

The junction box for high demands and heavy operating conditions.

- Break-proof material
- With pre-stamped push-out openings for cables
- With double membrane nipples (IP 54)
- Cover with stainless steel screws
- Insulation and sealing stoppers included

Number of cable and pipe connections, by type:

- FK110/111 => 7 x M20
- FK210/211 => 7 x M25, 2 x M20
- FK310/311 => 2 x M20, 5 x M20/25, 5 x M25/32
- FK410/411 => 2 x M20, 7 x M25/32, 2 x M25/32/40
- Material: PS, recyclable

Item No..	Type	Design	Colour	SU	CB	PL
7340060	FK110	for cables up to 4 mm ² , 80 x 80 x 63 mm	grey	1	70	2.240
7340063	FK210	For cables up to 6 mm ² , 110 x 110 x 67 mm	grey	1	30	960
7340066	FK310	For cables up to 10 mm ² , 140 x 140 x 79 mm	grey	1	24	768
7340069	FK410	For cables up to 16 mm ² , 180 x 180 x 91 mm	grey	1	12	384
7340061	FK111	for cables up to 4 mm ² , 80 x 80 x 63 mm	white	1	70	2.240
7340064	FK211	For cables up to 6 mm ² , 110 x 110 x 67 mm	white	1	30	960
7340067	FK311	For cables up to 10 mm ² , 140 x 140 x 79 mm	white	1	24	768
7340070	FK411	For cables up to 16 mm ² , 180 x 180 x 91 mm	white	1	12	384





Front-mounted cable trunking

■ Material: PP, recyclable

Item No.	Type	Make B line Cable duct	Make Rehau Signo BK, BS, BA	Make Gewiss Cable duct	Make Licatec Installation channel BR	Make Licatec Installation channel BRS-F
7370008	E830	X				
7370037	E831		X	X	X	
7370038	E832					X
7370039	E833					X
7370040	E834		X	X	X	

Item No.	Type	Design	Color	SU	CB	PL
7370008	E830	Cable channel socket box single for DIN profile rail	black	20	200	4.000
7370037	E831	Cable channel box single for suspended mounting	black	20	200	4.000
7370038	E832	Cable channel box single for clamped fixing	black	20	200	4.000
7370039	E833	Cable channel box double for clamped fixing	black	10	100	2.000
7370040	E834	Cable channel box double for suspended mounting	black	10	100	2.000



Floor-mounted cable trunking for electrical installation channels with TS 35 rail

■ Material: PP, recyclable

Item No.	Type	Make Kopos channel KE60/130
7370041	E835	X
7370042	E836	X

Item No.	Type	Design	Color	SU	CB	PL
7370041	E835	Cable channel box single Floor fixing + 47 mm	white	20	200	4.000
7370042	E836	Cable channel box double Floor fixing + 47 mm	white	10	100	2.000

Surface mounting junction boxes IP 30

- For quick and easy surface mounting
- Closed base with pre-shaped lateral cable gland
- With mounted 5-pin box terminal
- Cover with quick release screw
- With pre-shaped lateral cable gland
- Material: PS, FR, recyclable

Item No.	Type	Design	Color	SU	CB	PL
7330007	E180	75 x 75 x 25 mm	white	10	250	4.000
7330008	E181	55 x 55 x 25 mm	white	10	400	6.400



Ceiling canopy

The junction canopy for VDE-compliant ceiling outlet

- Made of impact-resistant plastic
- Base with pre-shaped cable outlets
- Including two-part strain relief
- Cover with quick fastener
- Depth 25 mm
- Material: PS, recyclable

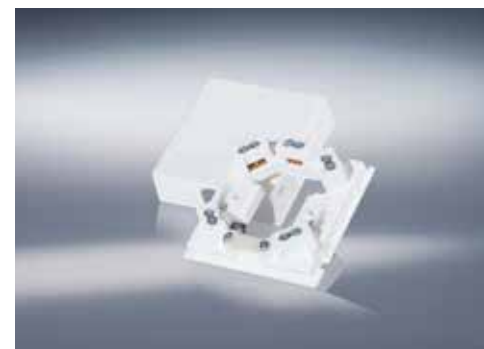
Item No.	Type	Design	Color	SU	CB	PL
7330006	DB1W	Diameter 75 mm, individually shrink-wrapped	white	1	100	6.000
7330004	DB1B	Diameter 75 mm, individually shrink-wrapped	brown	1	100	6.000



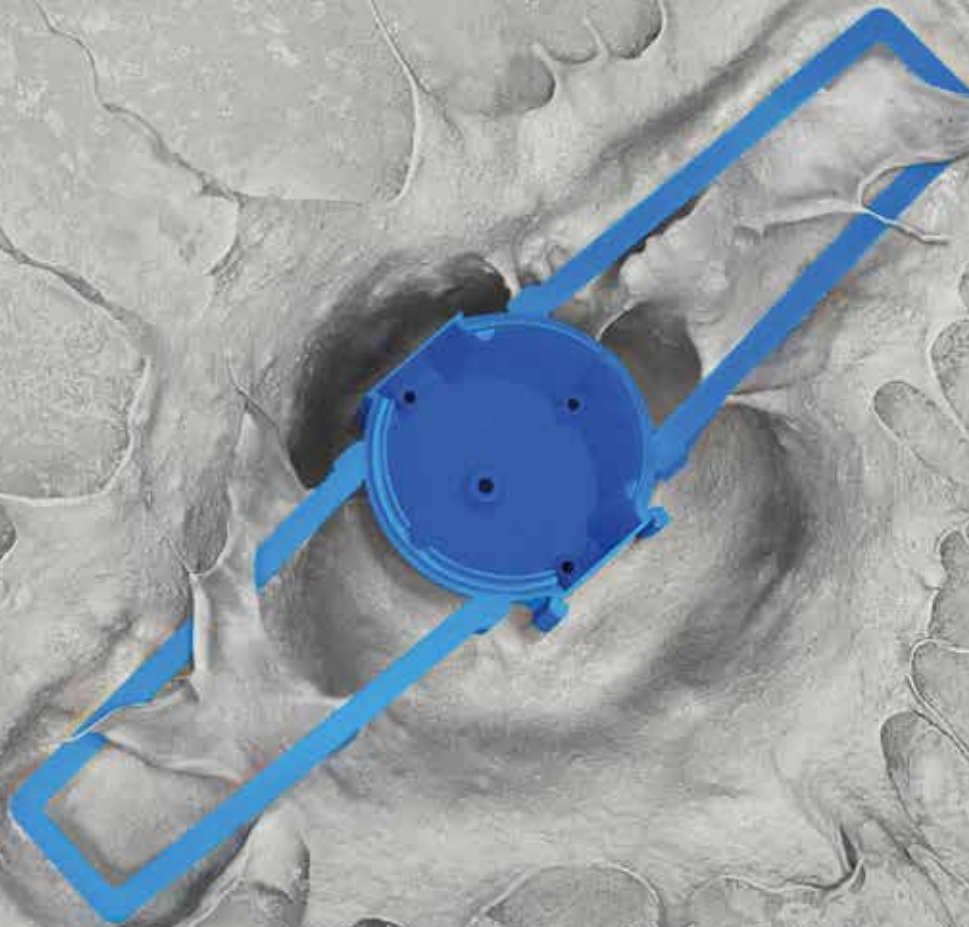
Cooker connector box

- Made of impact-resistant plastic
- Suitable for flush mounting
- With expansion claws
- With 5 contact-protected 6 mm² terminals
- Snapable cover
- Material: PE, PS, IUT, PA6, recyclable

Item No.	Type	Design	Color	SU	CB	PL
7370014	HAD01	80 x 80 x 25 mm	white	5	200	3.200



**The practical time
saver!**



Concrete box program

The right product for each application.

The f-tronic box outlet program offers you a high degree of flexibility and compatibility. It guarantees you a time-saving and secure concrete installation. Both for installation in site concrete as well as in precast factory, a range of over 30 products is available for you and provides you with a professional and time-saving installation.

The right solution for each task.

Whether you need to install switch elements, plug sockets or electronics modules, ceiling or wall-mounted built-in lights, speakers or other electronic components, our versatile and dimensionally stable solutions will provide you the necessary security to be able to perform a clean electric installation after concreting.

Advantages at a glance

- Complete concrete box program
With over 30 products
- Up to 70% time saving
- Quick-fix technology for fast assembly
- Tool-less leading-in tube
- Clean installation, even after the concreting
- Many combination possibilities
- Special solutions for ceiling and wall lamps
- Unbeatable price performance



The quick-fix technology for 70% time saving during assembly

Quick-fix socket box / Lighting outlet box

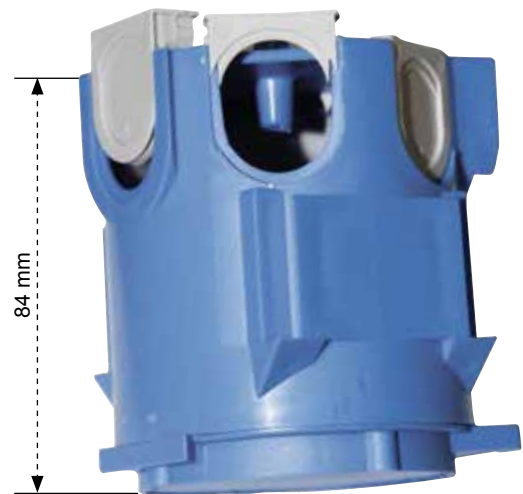
Areas of application

- Connection socket for fastening with nails on form-work or for assembly with wings
- Light box 35 mm for fastening with nails or for assembly with wings
- Ceiling box with support for ceiling hook



Advantages at a glance

- Tool-free mounting pipe sizes M20 and M25
- Secure strain relief of the pipes through quick-fix technology
- 70% time saving during assembly
- Combinable, absolutely fixed connection through proven sliding technology
- No re-finishing work and cutting of the pipes needed thanks to the quick-fix technology - absolutely sealed!
- Extremely time saving thanks to the tool-less leading-in tube of our quick-fix technology
- More terminal box, more space - rear leading-in tube
- 650° fire resistance
- Socket box/light outlet socket is torsion-resistant, horizontally and vertically alignable with 71 mm combination spacing



Slide M20/M25, closed
can be re-ordered
(Qty. 100 each).

Ideal for mounting
in precast factory in double walls.

Simple installation which saves time



Fix device lid or light outlet cover with nails on the formwork



Press box body on lid.



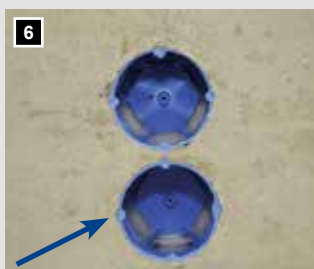
Close unused openings with slide.



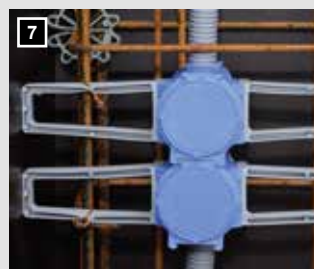
Insert and close tube with quick-fix slide.



Done, absolutely secure strain relief!



Here, no more pipes must be cut off. Extremely time saving - absolutely sealed!



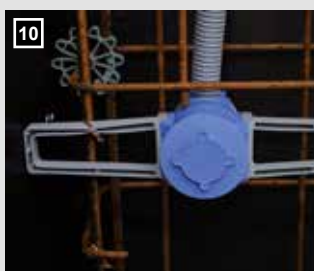
Assembly with wings for different concrete covers, simply turn wing.



For different concrete coverings. Simply turn wing.



Mounting a ceiling box with terminal box and support for ceiling hook.



Can also be delivered as lighting outlet box with outlet diameter 35 mm.

Quick-fix socket box/light outlet socket

■ Material: PP, recyclable

Item No.	Type	Design	SU	CB	PL
7400030	B150	Concrete socket box including slide, screw spacing 60 mm, 84 mm depth	50	100	2.400
7400031	B155	Concrete light box including slide, diameter 35 mm, 84 mm depth	50	100	2.400
7400006	B1300	Wings for B150/B155/B400	50	250	9.000
7400016	B1000	Slide M25 open for B150/B155	100	2.000	80.000
7400017	B1050	Slide M20 open for B150/B155	100	2.000	80.000
7400018	B1100	Slide closed for B150/B155	100	2.000	80.000

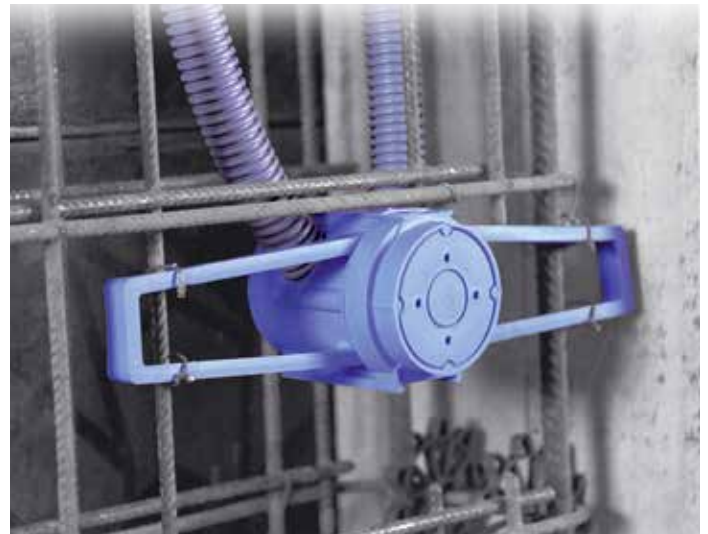


© Video

Concrete wing box

Advantages at a glance

- Just tie four times on the steel reinforcement, then done
- 70% time saving during assembly
- At various concrete coverings, simply turn box around 40-60 mm
- Simply line up the wing on the door frame; Standard spacing distance to box centre 15 cm, without measurement
- Combinable, absolutely fixed connection through proven sliding technology
- Can be combined with deep concrete box



70% time savings - during installation



Bore out tube holes.



Insert the tubes.



Press the lid.



Simply line up the wings simply up to the box centre (15 cm long) on the door frame.



Simply tie onto the steel reinforcement. Concrete cover up to 40 mm.



The mounting of the inverted wing concrete box also allows a concrete cover up to 60 mm.



Knock out the box lid.



Remove the lid of the box - done!

Concrete wing box

- Material: PP, recyclable

Item No.	Type	Design	Depth (mm)	SU	CB	PL
7400001	B210	Concrete wing box	90	50	50	1.200



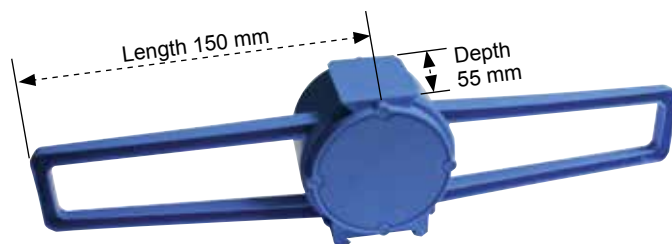
© Video



Flat concrete wing box

Advantages at a glance

- Just tie four times on the steel reinforcement, then done
- 70% time saving during assembly
- For various concrete coverings, simply turn box around 20-45 mm
- Simply line up the wing on the door frame; standard spacing distance to the box centre 15 cm, without measuring
- Combinable, absolutely fixed connection through proven sliding technology
- Optional with light outlet



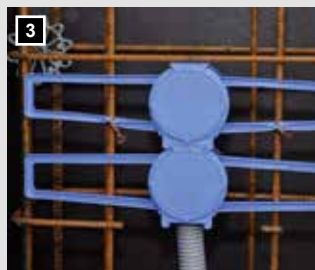
Mounting advice



Insert tube and simply tie on the steel reinforcement.



For more than 20 mm of concrete cover simply turn the box around.



Fixed connection through proven sliding technology during combinations.



Can also be delivered as light outlet socket diameter 35 mm.

Flat concrete wing box

for ready-made garages or thin concrete walls

- Material: PP, recyclable

Item No.	Type	Design	Depth (mm)	SU	CB	PL
7400015	B200	Flat concrete wing box	55	50	50	1.600
7400019	B205	Concrete wing box with light outlet diameter 35 mm	55	50	50	1.600



© Video

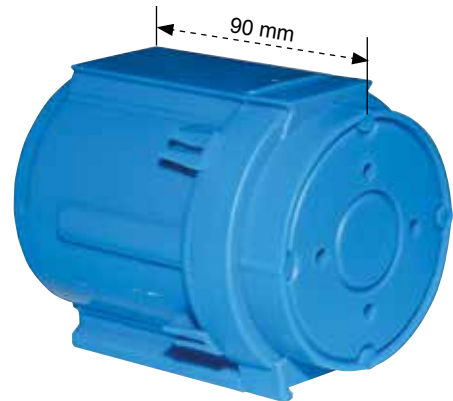
Concrete box deep

Areas of application

- Ceiling box with terminal box
- Support for ceiling hook
- Device junction boxes for mounting with nails on the formwork
- Can be combined with the proven wing concrete box

Advantages at a glance

- Box as ceiling box (support for ceiling hook) and device junction box (can be combined with proven wing concrete box)
- Two-piece concrete box for pipe sizes M20 and M25
- Combinable, absolutely fixed connection through proven sliding technology
- Unbeatable price performance



Mounting advice



Attach device lid with nails on the formwork



Punch out pipe or cable inlet using the crimping pliers.



Insert the pipe.



Done!



Box can be combined and stacked.



Fixed connection through proven sliding technology on the whole box length during combinations.

Concrete box deep

2-piece

- Material: PP, recyclable

Item No.	Type	Design	Depth (mm)	SU	CB	PL
7400029	W450	Deep concrete box, screw spacing 60 mm	90	50	100	2.400



© Video

Socket boxes



Universal large box

Advantages at a glance

- More terminal box than at conventional box
- To be mounted as ceiling box, support for ceiling hook
- Can be individually used, such as ceiling or wall mounting, mounting with wings
- Mounting with or without wings possible
- 650° fire resistance
- Halogen-free
- Suitable for installation for all types of formwork



Universal large box

for panel ceilings and much more

- Material: PP, recyclable

Item No.	Type	Design	Depth (mm)	SU	CB	PL
7400002	B400	Concrete universal box Screw spacing 60 mm	111	50	50	1.000
7400006	B1300	Wings for B150/B155/B400	k. A.	50	250	9.000

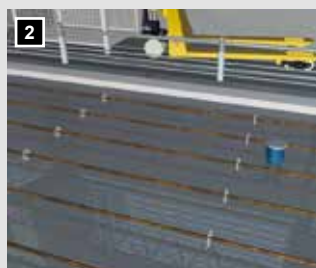


© Video

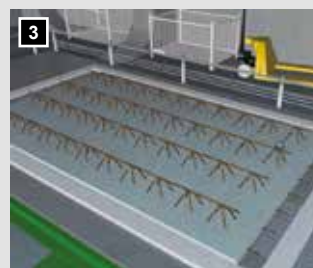
Mounting in precast concrete parts plant



Glue universal large box with hot glue on the sound table.



Steel reinforcement is inserted.



Concrete component is poured.

Installation in site concrete



1 Punch out hole with crimping pliers.



2 Unscrew lid.



3 Assembly as ceiling large box.

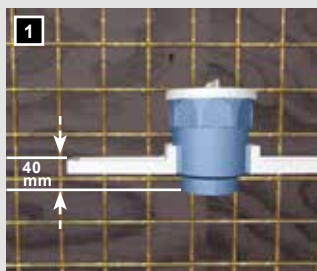


4 Wall mounting as electronics large box.

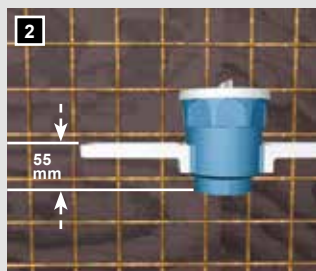


5 Assembly as electronics large box with wings.

Wall mounting with or without wings



1 Slide wing at distance of 40 mm, rotate wing at a different distance.



2 At a distance of 55 mm slide the wings on upside-down.



3 Assembly with wings on the steel reinforcement/electronics box.



4 Universal large box simple assembly using the wing.



5 Universal large box can be mounted in the wall with nails.

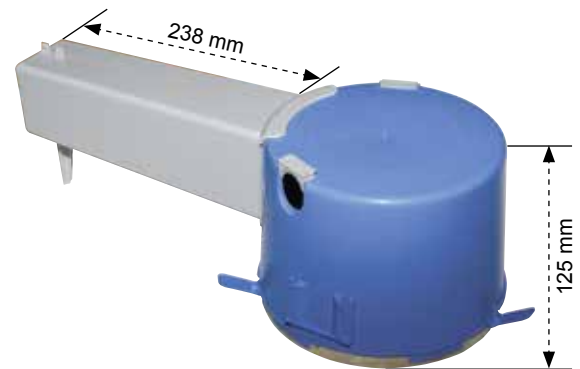
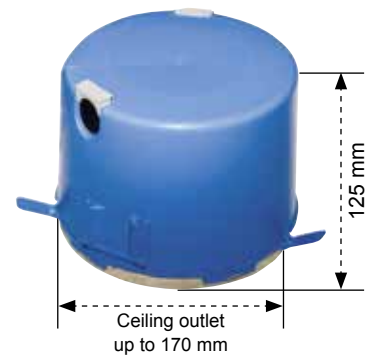


6 Insert tubes and use e.g. as electronics box or large terminal box.

XL 170 large box

Advantages at a glance

- Tool-free mounting pipe sizes M20 and M25
- Secure strain relief of the pipes through quick-fix technology
- No re-finishing work and cutting of the pipes needed thanks to the quick-fix technology - absolutely sealed!
- Extremely time saving thanks to the tool-less leading-in tube of our quick-fix technology
- One housing and one size for all installation parts
- For ceilings from 16 cm thickness
- The slim housing does not affect the structural analysis, insertion of reinforcement is much easier
- Tested quality, since our housings are tested with various lighting manufacturers; lights are mounted and tested (with test report) in the endurance test
- 650° fire resistance/halogen free
- For the installation of speakers, halogen spotlights, high-voltage halogen, LED, low-volt halogen, energy saving bulbs, halogen metal halide lamps, compact fluorescent lamps and much more.
- More assembly space thanks to large diameter 170 mm, 15 mm thick, stable mineral fibre plates



© Video

XL 170 large box with mineral fibre plate

Lighting and recessed housing

- Material: PP, recyclable

Item No.	Type	Design	SU	CB	PL
7400009	B500	Large box 170 mm diameter with mineral fibre plate including slide	14	14	280
7400010	B550	Large box 170 mm diameter with transformer tunnel, mineral fibre plate, including slide	10	10	240
7400006	B1300	Wings for B150/B155/B400	50	250	9.000

Spare parts

Item No.	Type	Design	SU	CB	PL
7400016	B1000	Slide M25 open for b150/b155	100	2.000	80.000
7400017	B1050	Slide M20 open for B150/B155	100	2.000	80.000
7400018	B1100	Slide closed for B150/B155	100	2.000	80.000
7400013	B1200	Replacement - mineral fibre plate for XL 170, 15 mm thick	10	10	400

Installation in site concrete



Mineral fibre panels with pictogram
"Do not break!"



In site concrete, nail on formwork, glue
in the precast factory on sound table.



Simply slide transformer tunnel.



Quick-fix technology. Tool-free lead-
ing-in tube, secure strain relief.



Assembly with wings and transformer tunnel.

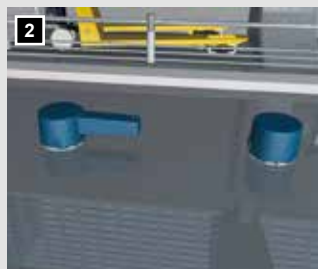


XL 170 without transformer tunnel,
installation with wings.

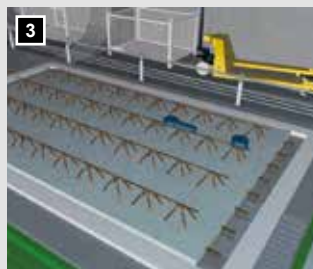
Mounting in precast concrete parts plant



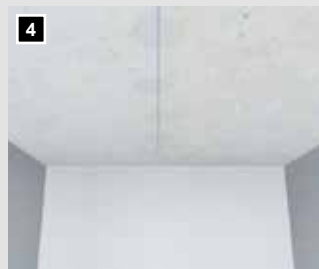
Glue XL 170 large box with hot glue on
the sound table.



Assemble XL 170 large box optionally
with our without transformer tunnel.



Steel reinforcement is inserted and the
concrete is poured.



Final Assembly:
Mark the building line, inaccuracies
can be corrected now.



With a hole cutter, the individual
opening is drilled out and patched onto
the mineral fibre plates.



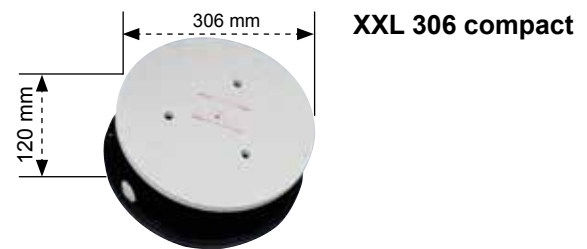
Now, heaters or other appliances can
be mounted.

XXL 306 large box / XXL 306 compact

Advantages at a glance

- Individual cutout thanks to 306 mm mineral fibre plate
- No support tube needed thanks to stable metal plate
- One housing and one size for all installation parts
- Tested quality, since our housings are tested with various lighting manufacturers; lights are mounted and tested (with test report) in the endurance test.
- 650° fire resistance/halogen free
- Structural analysis is not affected
- Stable, 15 mm thick mineral fibre plate

XXL 306 large box



XXL 306 compact

XXL 306 large box with mineral fibre plates

Lighting and recessed housing

- Individual height adjustment 130-200 mm
- Material: PP, recyclable



Video

Item No.	Type	Design	SU	CB	PL
7400011	B600	Large box 306 mm diameter with 15 mm mineral fibre plate	5	5	20
7400014	B1250	Replacement mineral fibre plates 306 mm diameter	5	5	150

XXL 306 Compact with mineral fibre plate

Lighting and speaker installation housing

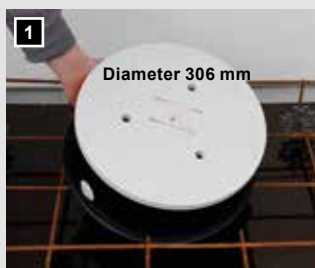
- Material: PP, recyclable



Video

Item No.	Type	Design	SU	CB	PL
7400027	B610	Compact box 306 mm diameter with 15 mm mineral fibre plate	5	5	20
7400014	B1250	Replacement mineral fibre plates 306 mm diameter	5	5	150

Mounting example XXL 306 compact in site concrete



Mineral fibre panels with pictogram
"Do not break!"



In site concrete, nail on formwork, glue
in the precast factory on sound table.

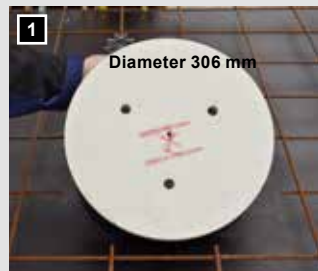


Insert the tubes/cable and secure
stable steel plate with cable ties.



Done!

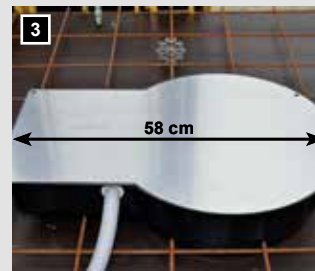
Mounting large box in site concrete



Mineral fibre panels with pictogram
"Do not break!"



In site concrete, nail on formwork or
glue in the precast factory on sound
table.



Simply attach the upper part - rein-
forcement is located beneath the box,
no restriction of the structural analysis.

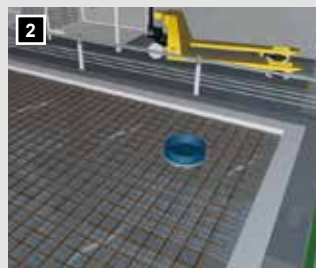


Height adjustable from 130-200 mm.
Simple fitting with special threaded
rods.

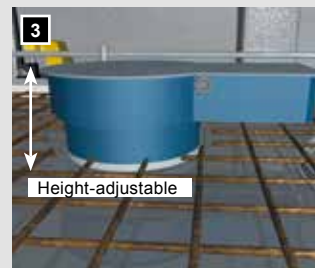
Mounting large box in the precast concrete parts plant



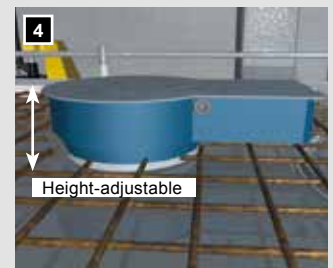
Glue 306 mm diameter lower part/co-
ver with hot glue onto the sound table.



Steel reinforcement is inserted.



Slide XXL large box on the cover of
130-200 mm.



Slide XXL large box at the desired
distance.



Concrete is poured.



Final Assembly:
Mark the building line, inaccuracies
can be corrected now.



The individual hole is drilled with a hole
cutter...



... and patched onto the mineral fibre
plates...



... now downlights or other
built-in appliances can be installed.

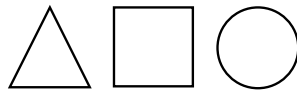
XXL flexible large box/ XXL 306 flex compact

Advantages at a glance

- With an individual ceiling cut-out up to 300 mm diameter (specify when ordering)
- Custom cut-outs can be produced in the short term
- Structural analysis is not affected
- No additional reinforcements in the flexible large box and flex compact needed
- Ideal as object large box, low-cost and easy installation
- Installation in both exposed concrete as well as in site concrete is possible
- No additional parts required
- 650° fire resistance/halogen free
- With just 1 extra piece, individual ceiling cut-outs without additional costs is possible; e.g. round or rectangular can be delivered within 10 working days
- Ideal for exposed concrete

Additional individual ceiling cut-outs, e.g. round or rectangular can be delivered within 10 working days.

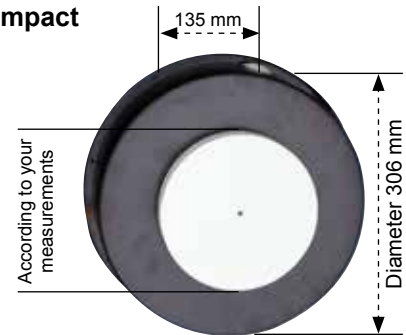
Example cutouts



XXL flexible large box



XXL 306 flex compact



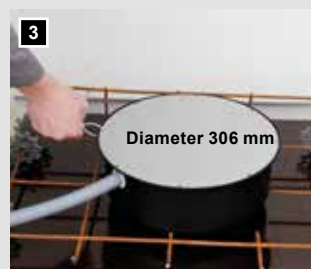
Mounting example XXL 306 flex compact in site concrete



Custom-made outlet opening.



In site concrete, nail on formwork, glue in the precast factory on sound table.

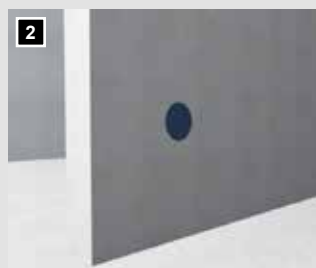
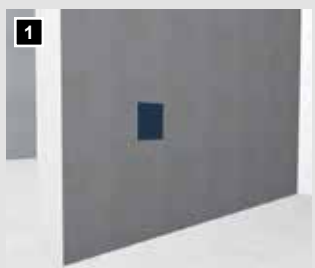


Insert the tubes/cable and secure stable steel plate with cable ties.

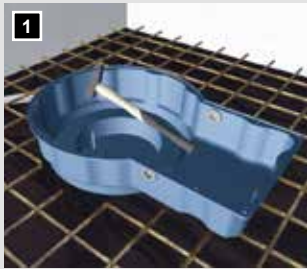


Done!

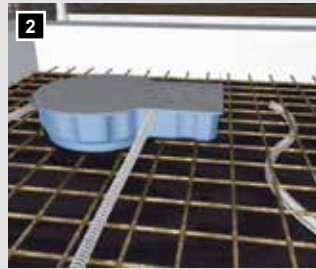
Custom cut-outs can be produced



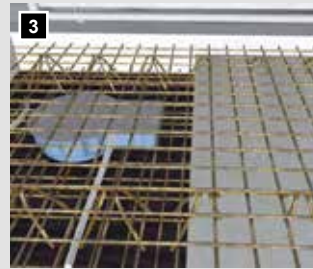
Mounting flexible large box in site concrete



1 Fasten XXL flexible large box with nails to the formwork.

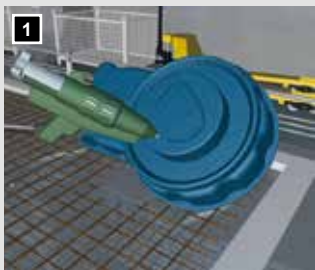


2 Fix cover with the supplied cable ties and insert tubes.

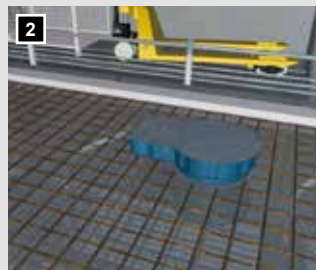


3 Steel reinforcement is inserted and the concrete is poured.

Mounting flexible large box in precast concrete parts plant



1 Glue XL flexible large box with hot glue on the sound table.



2 Steel reinforcement is inserted.



3 Concrete component is poured.



4 Knock out opening with a hammer.

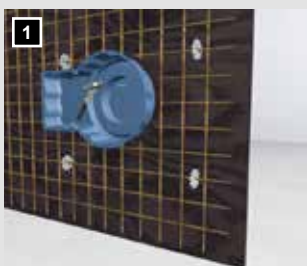


5 Ready, no re-working needed.

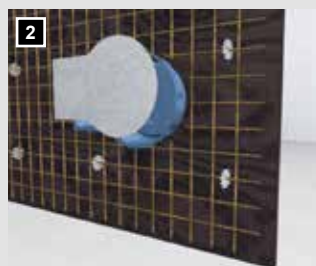


6 Now, downlights or other appliances can be mounted.

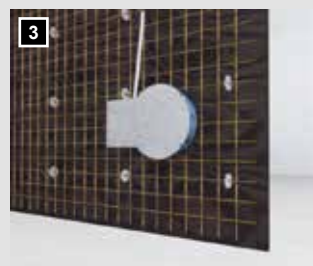
Flexible large box as a special solution for wall mounting



1 Fasten XXL flexible large box to the formwork with nails.



2 Fix cover with the supplied cable ties.



3 Insert conduit or cable, then the concrete is poured.



XXL flexible large box

Lighting and recessed housing

- Material: PP, recyclable

Item No.	Type	Design	SU	CB	PL
7400012	B650	Flexible large box 306 mm diameter	1	1	20



XXL 306 flex compact

Lighting and speaker installation housing

- Material: PP, recyclable

Item No.	Type	Design	SU	CB	PL
7400028	B660	Flex compact box 306 mm diameter	1	1	20



Ⓜ Video

Wall and ceiling elbow 30°

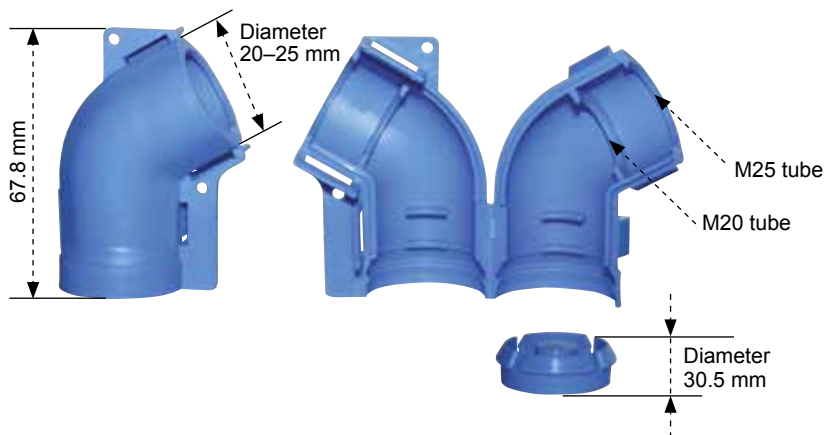
for pipes 20 or 25 mm

- Installation as wall or ceiling elbow is possible
- Tool-free mounting pipe sizes M20 and M25
- Absolutely secure strain relief for the tubes
- Safe continuation of the M20 or M25 pipes is possible
- 650° fire resistance
- Halogen-free
- Material: PP, recyclable



Video

Item No.	Type	Design	SU	CB	PL
7400007	B300	Wall / ceiling elbow 30°, M20, M25	50	400	9.600



1 Nail lower part on the formwork.



2 Click in pipe M20 or M25.



3 Simply collapse.



4 Stick onto the lower part.
Absolutely secure strain relief!



End / transition nozzles

for pipes M20/M25/M32

- Suitable for all types of formwork
- Suitable for the connection of pipes or as a ceiling outlet
- Just fasten onto the formwork with a nail
- 650° fire resistance
- Halogen-free
- Material: PP, recyclable

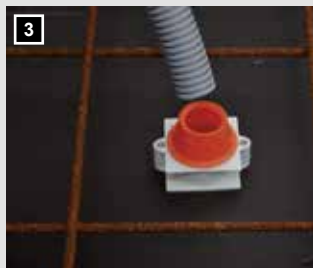
Item No.	Type	Design	SU	CB	PL
7400020	B820	End/transition nozzles M20 tube	50	500	12.000
7400021	B825	End/transition nozzles M25 tube	25	100	5.400
7400022	B832	End/transition nozzles M32 tube	25	100	5.400



Nail base on the formwork.



Attach the upper part.



Lock in pipe.



Done!

Folding socket

for quick and safe connection

The folding socket is suitable for vibration, jolted, compressed concrete and for burial.
Of course it can be used also in dry walls, under plaster or on plaster.
Secure strain relief.

Technical data:
Color grey.
Plastic, halogen and silicone-free.
Easy to open and close.
Material: PP, recyclable



Item No.	Type	Design	SU	CB	PL
7400025	B920	Folding socket M20, connection socket, M20	50	50	21.600
7400026	B925	Folding socket M25, connection socket, M25	40	40	17.280



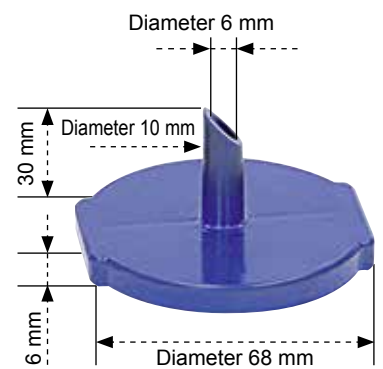
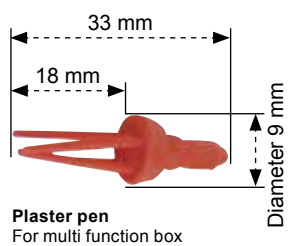
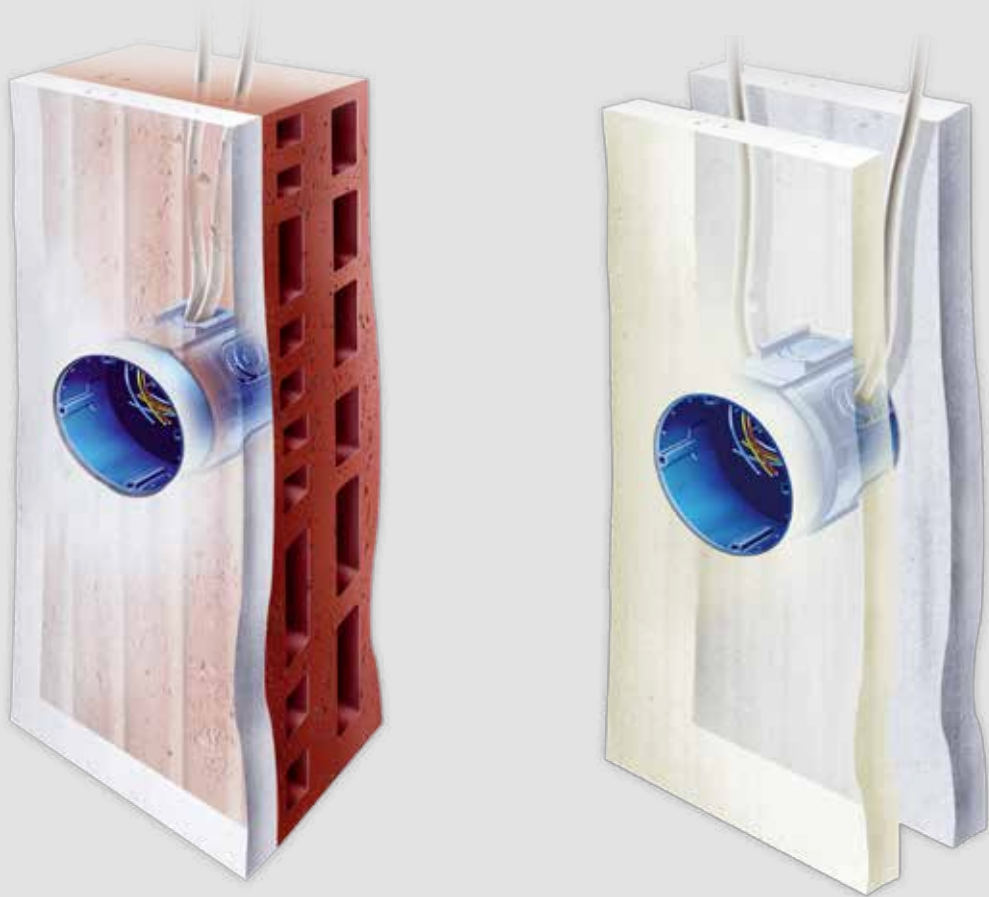
Insert the tubes.



Close the folding socket.



Secure strain relief - done!



Multi function box - flush with the plaster according to VDE thanks to height adjustment Flush mounted installation



1 Set the box lower part flush with the brickwork.



2 Insert the electric cables or pipes.



3 Lock the box lid in place once or twice.



4 Cover protrudes about 2.5 - 3 cm.



5 The fettler pushes the upper part of the box flush with the plaster when drawing the plaster with the aluminium strip



6 The box is found quickly with the plaster pen.



7 Hit the box lid...



8 ... and remove plaster skin – done!

Benefits of the multi function box Flush mounting at a glance

- Never again search for boxes with a hammer
- The plaster cover is integrated
- The boxes are stackable and can be combined
- Always clean inside box
- Flush with plaster thanks to lid latch.
The box cover can be adjusted for plaster flushness by the plasterer. The plasterer must not plaster "around" the box like in conventional boxes.
- The plaster pen is reusable
- VDE tested

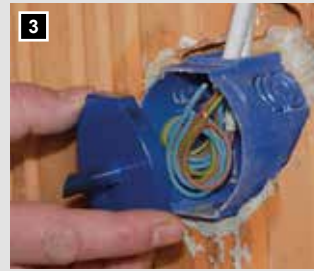
Multi function box - flush with the plaster according to VDE thanks to height adjustment Attachment installation



1 Place box lower part ...



2 ... so it is about 1 cm from the wall.



3 Press the drill press.



4 The centre spike serves as centering for the 68 mm diameter drill bit.



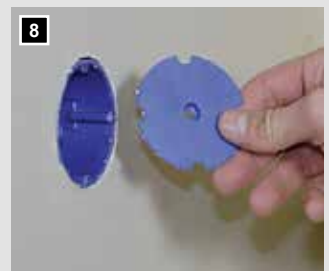
5 You can mill the box hole without re-measuring the mounting location.



6 Gently take out the milled-through drill press.



7 Insert the upper part of the box and push until flush.



8 Remove box lid - finished!

Advantages of installing the attachment at a glance

- No more cable search
- Easy discovery, the box can be found again by the pierced through drill press spike
- Enormous time savings. The device lid and the device are attached in a single operation
- No more unnecessary wall damage. The damage that the electrician usually causes by searching on the cavity wall will now no longer occur
- Clean work. The top has an integrated "plaster cover". This prevents colour penetrating into the box during painting (spraying)
- The multi function box is stackable

Technical data:

Multi function box dimensions

Depth-adjustable
from 58 mm to 75 mm
Outer diameter = 66 mm
Hole spacing inside = 60 mm

Drilling cover dimensions

Total height = 36 mm
Spike height = 30 mm
Drill diameter (inner) = 6 mm
Cover diameter = 68 mm

Adhesive disk

Dimensions
diameter = 60 mm

Adhesive disk
For plunger



Multi function box

Multi function box - flush with the plaster according to VDE thanks to height adjustment Cavity wall installation



1 Stick to the back of the first cladding wall and insert the electric cables or pipes.



2 Press the drill press.



3 The dry wall builder knocks out a hole with a hammer and lets the central spike get through, this serves as a centre for the drill bit.



4 The centre spike serves as centering for the 68 mm diameter drill bit.



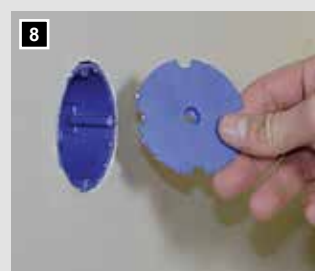
5 You can mill the box hole without re-measuring the mounting location.



6 Gently take out the milled-through drill press.



7 Insert the upper part of the box and push until flush.



8 Remove box lid - finished.

Advantages of cavity wall installation at a glance

- Insert the light cable!
The circuits can already be jammed before the wall is closed. Should it transpire that a cable is missing, or the number of cores is not enough, then a cable can be drawn very easily
- Easy to find! The box can now be found by the pierced through drill press spike
- No more looking for cables! The boxes can be drilled out even after the painting work since elaborate cable searching isn't necessary
- Huge time savings! The device cover and the device are mounted in a single operation
- Clean work! The top has an integrated "plaster cover". This prevents colour penetrating into the box during painting (spraying)
- No more unnecessary wall damage!
The damage that the electrician usually causes by searching on the cavity wall will now no longer occur
- The multi function box is stackable

Multi function box

- Material: PP, recyclable

Item No.	Type	Design	SU	CB	PL
7310134	KD66	Combi box diameter 66 mm, depth-adjustable	25	100	2.000
7390050	KDBD	Drilling cover for combi box	50	400	12.000
7390073	KDPF	Plaster pen for combi box	25	1.000	168.000
7390074	KDKS	Adhesive disk for combi box	25	500	56.000



Video

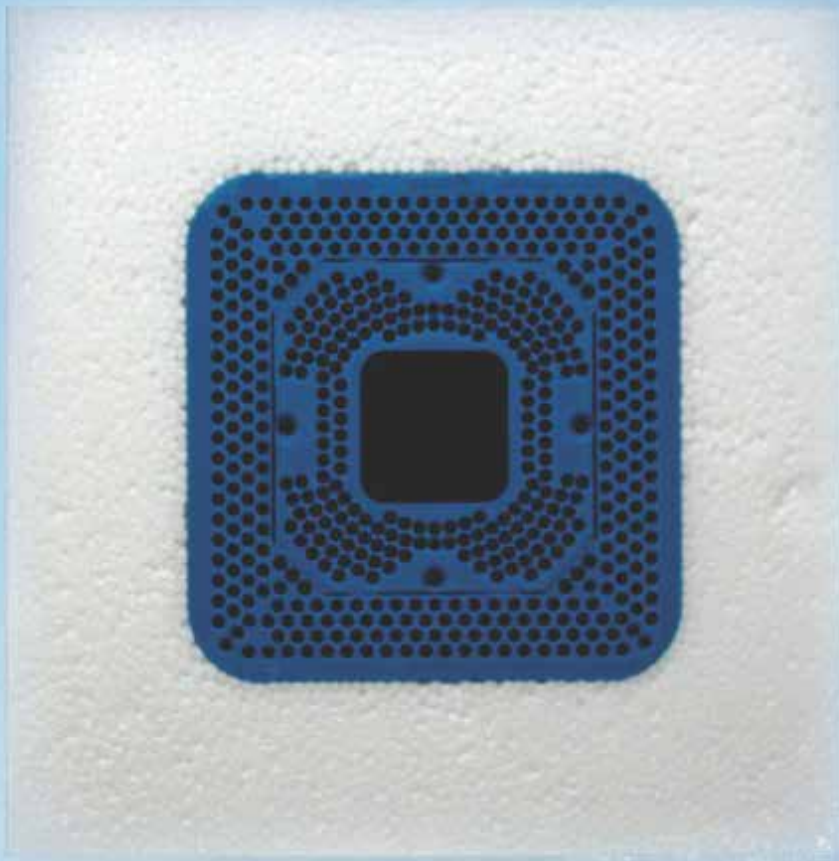


Video



Video

The cost-saver!



Equipment carrier for ETICS / TIE

TIE-Systems

Thermally insulated electrical systems

TIE-systems are newly developed, trend-setting electrical installation elements for a homogeneous, thermal bridge free compact building façade. The system elements consist of a foamed, firmly integrated electric element, such as an socket box or an equipment carrier and a highly insulating sleeve in the form of a rectangular block, which consists of polyurethane foam, EPS and Neopor®.

No matter whether socket box or equipment carrier, all components are already insulated ready to use and can be mounted quickly. In addition, TIE-system elements are characterised by a large mounting surface and high stability for a wide range of electrical applications.

Equipment carrier for ETICS / TIE 87

TIE socket boxes.....	93
TIE junction boxes	94
TIE equipment carrier	94
TIE corner elements	95
TIE hybrid adhesive	95
TIE accessories	96



All TIE system elements are delivered in two basic sizes: 100-140 mm and 160-200 mm insulation thickness. On request special sizes 220-240 mm and 260-300 mm insulation thickness are available.

TIE-Systems

While the facade itself reaches a high insulation value, thermal bridges often result at areas with electrical installations. There, condensation and mould form after only a short time. In TIE-systems, the same installation elements are firmly integrated in similar insulating materials such as insulation and exhibit the same insulation thickness – this means consistently equal insulation quality and a non-stop thermal insulation system.

The methods currently used to attach conventional electrical installation components to facades, not longer meet the requirements of an uninterrupted heat insulation composite system (ETICS). Even if such components are described as „thermal bridge-free“, they fall short of the current insulation regulations in a system network of the same materials.

All TIE-system elements have a rectangular, right-angled shape. Thus the facade builder can easily attach their insulating panels around the TIE elements already attached by the electrician without any gaps.

The adaptation of the individual installation element to the facade insulation thickness is possible without much effort thanks to the removable partition plates.

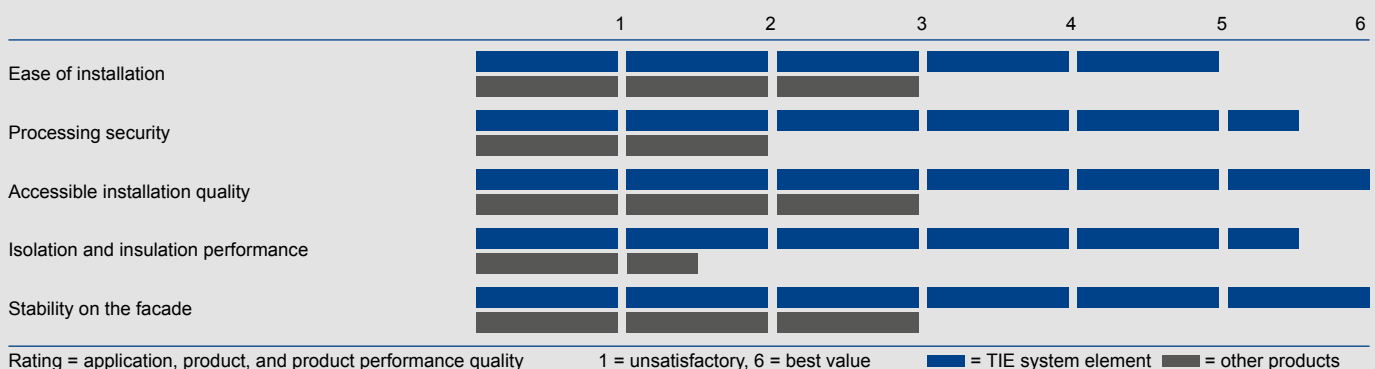
Our well-known device mounting boxes are incorporated into all elements of the system. All system elements are available each with 100-140 mm and 160-200 mm insulation thickness (on request, 220-260 and 260-300 mm). The TIE-system elements are attached to the facade with the special hybrid adhesive; the universal mounting plate for devices up to 80 kg is in addition attached to the facade with the enclosed universal frame plugs.

The thermally insulated electrical systems are currently the most efficient electrical installation elements for an insulated facade. TIE-system elements are absolutely free of thermal bridges, they consist of the same insulating material as that of the total facade insulation. All electrical installations with the TIE-system elements are properly carried out thus there is no discolouration or no condensation and therefore also no fungus on the facade. Professionally installed TIE-system elements allow a system warranty of the insulation compound of a building envelope.

NEW: Up to 300 mm of insulation thickness available on request!

TIE-systems for competing products - comparison

- TIE-system elements consist of the same insulating materials as wall insulation
- All TIE-system elements have the same insulation thickness and insulation quality as facade insulation
- All TIE-system elements are characterized by a large mounting surface and high stability for a wide variety of electrical installations on the insulated facade. Electric switches, sockets, lights, motion detectors, wind gauges, cameras, alarms, headlights and satellite dish can be attached to the TIE-system elements.

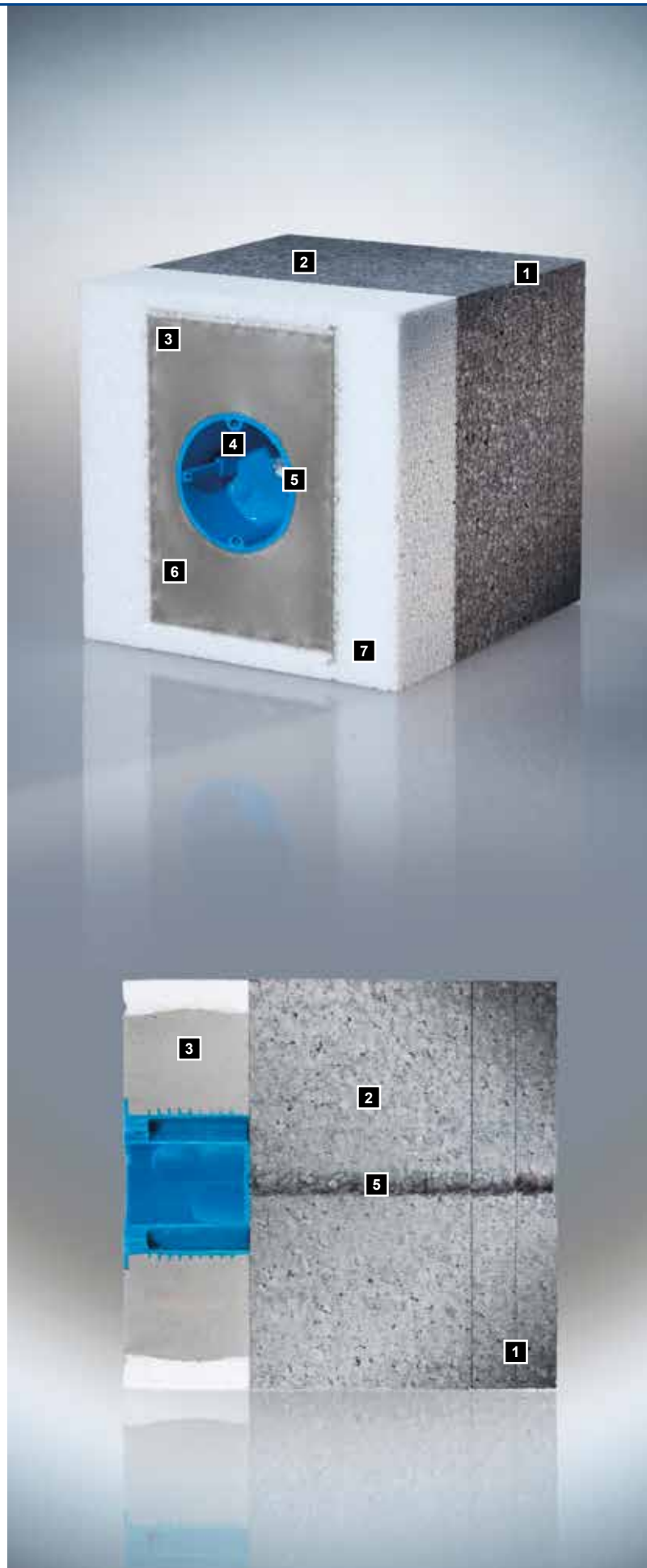


Advantages at a glance

- Great savings in time and costs
- Fast and easy installation
- No additional waterproofing and insulation work required
- Versatile mounting options
- With corner element and equipment carriers up to 80 kg lifting capacity
- Homogeneous thermal bridge free compact exterior
- High autostability and overall stability
- No discoloration and condensation on the facade, no mould and algae
- Full integration in the facade
- 20 mm plates can be separated

Building a TIE-system element

- 1** Insulation thicknesses available of 100-140 mm and 160-200 mm (on request, 220-240 and 260-300 mm), insulation thickness adjustment via individually detachable 20 mm plates
- 2** Insulating material Neopor® 15 with increased insulation to compensate for the loss of insulation through the socket box
- 3** Insulating material polyurethane (2 components hard foam)
- 4** Socket box, junction box or universal equipment carriers firmly integrated
- 5** Pre-drilled cable duct diameter 10 mm
- 6** Installable material which holds Spax screws, for example
- 7** Insulation material EPS 20 white





TIE-systems the right element for every application

TIE-system elements are the ideal solution for all electrical installations on thermally insulated building facades such as switches and sockets, lights, motion detectors, temperature sensors, wind gauges, cameras, alarm systems, speakers, satellite dishes and illuminated adverts.

In addition, TIE-system elements are characterised by a large mounting surface and high stability for a wide range of electrical applications. Not only is the simple and efficient assembly of elements an advantage, but the fact that it is quick and easy to attach the insulation panels around the rectangular TIE-system elements in the compact façade is also an advantage. The design of the TIE-system elements allows trouble-free integration in the external thermal insulation composite systems (ETICS).

Easy and fast installation



1. Adjust the insulation thickness, i.e. disconnect 20 mm insulation plates.



2. Cut off conduit flush with the wall.



3. Wind-proof lock conduit with sealing plugs (included in the delivery).



4. Apply TIE hybrid adhesive in thin beads (5-6 mm).



5. Plug the cable into the pre-drilled leadthrough.



6. Press element - sets after approx. 2 min.



The price breaker!

TIE 2.0 Thermofix multifunction socket box

Thanks to our fully automated production processes and new tools, the elements are more stable and especially unbeatable in terms of price.

- Thermofix socket box, single and equipment carrier plate up to 180 NM
- For EPS facade insulation with insulation thickness 80-200 mm
- System parts with integrated multi function boxes for sockets and switches according to DE, CH, and FR standards
- Included in delivery: additional device carrier plate up to 12 kg load on direct wall mounting screwable with socket box and tube fittings M20 (E07) and M25 (E08)
- Pre-drilled cable duct diameter 10 mm
- Material: PU

Item No.	Type	Design	H x W x D (mm)	SU	CB	PL
7810041	EPS20-MULTI	For 80-200 mm insulation	184 x 184 x 205	1	12	192



TIE socket boxes, single

- For EPS wall insulation with insulation thickness: 100-300 mm
- System parts with firmly integrated socket boxes E 115
- Supplied with tube fittings M20 (E07) and M25 (E08)
- Pre-drilled cable duct diameter 10 mm
- Material: PU

Item No.	Type	Design	Deep box (mm)	H x W x D (mm)	SU	CB	PL
7810015	EPS14-115	For 100-140 mm Insulation	47	194 x 194 x 145	1	48	192
7810021	EPS20-115	For 160-200 mm Insulation	47	194 x 194 x 205	1	48	192
7810027	EPS24-115	For 220-240 mm Insulation	47	194 x 194 x 245	1	36	144
7810033	EPS30-115	For 260-300 mm Insulation	47	194 x 194 x 305	1	36	144

EPS24-115 and EPS30-115 on request.



TIE double socket boxes

- For EPS facade insulation with insulation thickness: 100-300 mm
- System parts with integrated socket boxes E 118
- Supplied with tube fittings M20 (E07) and M25 (E08)
- Pre-drilled cable duct diameter 10 mm
- Material: PU

Item No.	Type	Design	Deep box (mm)	H x W x D (mm)	SU	CB	PL
7810017	EPS14-118	For 100-140 mm insulation	47	194 x 194 x 145	1	48	192
7810023	EPS20-118	For 160-200 mm insulation	47	194 x 194 x 205	1	48	192
7810029	EPS24-118	For 220-240 mm Insulation	47	194 x 194 x 245	1	36	144
7810035	EPS30-118	For 260-300 mm Insulation	47	194 x 194 x 305	1	36	144

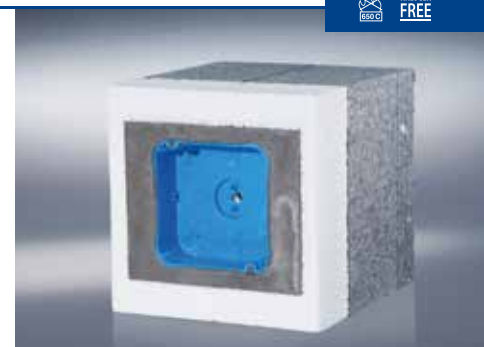
EPS24-118 and EPS30-118 on request.

TIE junction box

- For EPS facade insulation with insulation thickness: 100-300 mm
- System parts with tightly integrated junction box E 116, dimensions 104 x 104 mm
- Supplied with tube fittings M20 (E07) and M25 (E08)
- Pre-drilled cable duct diameter 10 mm
- Material: PU

Item No.	Type	Design	H x W x D (mm)	SU	CB	PL
7810016	EPS14-116	For 100-140 mm insulation	194 x 194 x 145	1	48	192
7810022	EPS20-116	For 160-200 mm insulation	194 x 194 x 205	1	48	192
7810028	EPS24-116	For 220-240 mm insulation	194 x 194 x 245	1	36	144
7810034	EPS30-116	260-300 mm insulation	194 x 194 x 305	1	36	144

EPS24-116 and EPS30-116 on request.



TIE equipment carrier, up to 20 kg

- For EPS facade insulation with insulation thickness: 100-140 mm, 160-200 mm
- System part T20 resilient for parts up to 20 kg
- Supplied with tube fittings M20 (E07) and M25 (E08)
- Installation-ready mounting surface, density 220 kg / m³, size 110 x 160 mm
- Pre-drilled cable duct diameter 10 mm
- Support element: Outer diameter 85 mm
- Material: PU

Item No.	Type	Design	Carrier depth (mm)	H x W x D (mm)	SU	CB	PL
7810019	EPS14-T20	For 100-140 mm Insulation	47	194 x 194 x 145	1	48	192
7810025	EPS20-T20	For 160-200 mm Insulation	47	194 x 194 x 205	1	48	192
7810031	EPS24-T20	For 220-240 mm Insulation	47	194 x 194 x 245	1	36	144
7810037	EPS30-T20	For 260-300 mm Insulation	47	194 x 194 x 305	1	36	144

EPS24-T20 and EPS30 T20 on request.

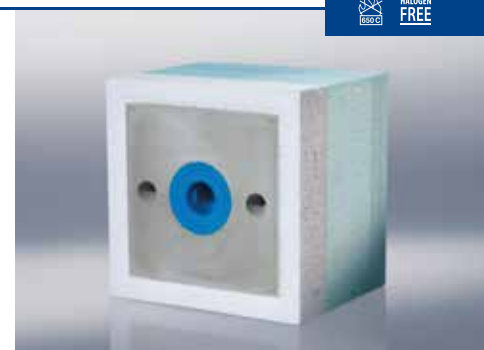


TIE equipment carrier, up to 80 kg

- For EPS facade insulation with insulation thickness: 100-140 mm, 160-200 mm
- System part T80 resilient for attachment parts up to 80 kg, mounting screws included
- Supplied with pipe fittings M20 (E07) and M25 (E08), two universal frame anchors with screws and washers, two PU sealing plugs
- Installation-ready mounting surface, density 220 kg / m³, size 194 x 194 mm
- Support element: Outer diameter 85 mm
- Material: PU

Item No.	Type	Design	Carrier depth (mm)	H x W x D (mm)	SU	CB	PL
7810020	EPS14-T80	For 100-140 mm insulation	47	250 x 250 x 145	1	24	96
7810026	EPS20-T80	For 160-200 mm insulation	47	250 x 250 x 205	1	24	96
7810032	EPS24-T80	For 220-240 mm Insulation	47	250 x 250 x 245	1	18	72
7810038	EPS30-T80	For 260-300 mm Insulation	47	250 x 250 x 305	1	18	72

EPS24-T80 and EPS30-T80 on request.





TIE corner elements

- For EPS facade insulation with insulation thickness: 100-300 mm
- Supplied with tube fittings M20 (E07) and M25 (E08)
- Installation-ready mounting surface, density 220 kg / m³, size 100 x 100 mm
- Prefabricated pipe penetration diameter 20 mm
- Loading capacity up to 12 kg
- Material: PU

Item No.	Type	Design	H x W x D (mm)	SU	CB	PL
7810018	EPS14-ECK	For 100-140 mm insulation. Equipment carrier for corner mounting	140 x 370 x 145	1	32	128
7810024	EPS20-ECK	For 160-200 mm insulation. Equipment carrier for corner mounting	140 x 370 x 205	1	32	128
7810030	EPS24-ECK	For 220-240 mm insulation. Equipment carrier for corner mounting	140 x 450 x 245	1	17	68
7810036	EPS30-ECK	For 260-300 mm insulation. Equipment carrier for corner mounting	140 x 450 x 305	1	16	64

EPS24-ECK and EPS30-ECK on request.



TIE hybrid adhesive

- Setting time 1-2 mins.
- Hardened after 24 hours
- Sufficient for approx. 12 system elements

Item No.	Type	Design	SU	CB	PL
7810014	251 KL	Hybrid adhesive, 310 ml	1	20	360



TIE Styrocutter

The mobile device for quick use! The professional hand cutters for insulation and insulating panels made of Styrodur, styrofoam and polystyrene foam is the ideal complement to large glow-wire cutters.

- Delivery including blade and accessories in a practical case
- 16-stage regulation of the cutting temperature
- Mains cable 3 m long with euro plug

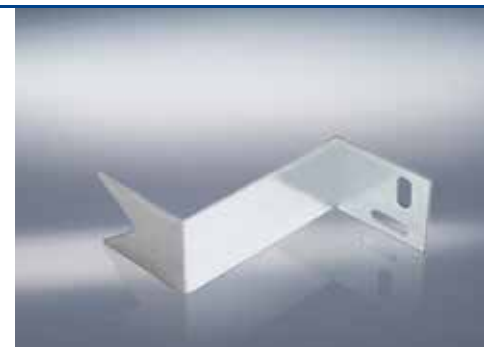
Item No.	Type	Design	SU	CB	PL
7820001	253 SC	TIE Styrocutter incl. 200 mm blade in a practical case	1	1	500
7820002	253-SC-EK	Spare blade 200 mm	1	1	5.000

TIE mounting angle Kit

As an alternative for quick bonding we now offer the mounting bracket with nail or screw fixing.

- Bracket set for nail or screw fixing
- Material: Steel

Item No.	Type	Design	SU	CB	PL
7810042	252 WK	TIE mounting bracket, 2 piece set	1	10	4.000



Insulation fixing

For subsequent fastening of accessories, such as doorbells, lamps, letter boxes, drainpipes and motion detectors in an existing ETICS.

- Material: PA, recyclable

Item No.	Type	Design	SU	CB	PL
7820004	DSD50	Insulation fixing length 50 mm, Carrier plate diameter 28 mm	25	750	30.000
7820003	DSD85	Insulation fixing length 85 mm, Carrier plate diameter 28 mm	25	400	19.200





Connection terminals

- Material: Brass, nickel-plated

Item No.	Type	Design	SU	CB	PL
7510006	ASK1	for rod/cross ground, single, for round wire 8-10 mm ²	10	200	4.800



Bath grounding clamps

The contact pins for proper grounding of bathtubs and shower basins.

- Connection option for round pipes up to 16 mm²
- Material: Brass, nickel-plated
- Bolt thread M6

Item No.	Type	Design	SU	CB	PL
7510007	BEK16	For round pipe up to 16 mm ² , with bolt thread M6	10	100	16.000



Ground strap clamp

Earthing clip according to VDE 0190/5.73 for galvanized steel tubes and copper pipes.

- Material: Tension band stainless steel 1.4301, clamp body steel

Item No.	Type	Design	SU	CB	PL
7510008	EBS1	$\frac{1}{8}$ - $1\frac{1}{2}$ " for connection 2.5-16 mm ² , mounted	10	200	6.400
7510009	EBS2	$\frac{1}{8}$ - $\frac{3}{8}$ " for connection 2.5-16 mm ² , mounted	10	200	6.400
7510010	EBS4	$\frac{1}{8}$ - 4" for connection 2.5-16 mm ² , mounted	10	200	6.400



Grounding clamps

- Material: Copper, nickel plated

Item No.	Type	Design	SU	CB	PL
7510011	ERS1/2	$\frac{1}{2}$ " (18-22 mm) with connection terminal	10	200	8.000
7510012	ERS1/4	$\frac{1}{4}$ " (13-15 mm) with connection terminal	10	200	8.000
7510013	ERS3/8	$\frac{3}{8}$ " (15-18 mm) with connection terminal	10	200	8.000

Potential equalisation rail

Potential equalisation rail according to VDE 0618, part 1.

- 7 terminals for conductor cross section 2.5-16 mm²
- For one grounding band 30 x 3.5 mm
- For one solid round conductor diameter 7-10 mm (lightning protection)
- Mounting option with 4 slotted holes in the plastic base
- Robust, sealable plastic cover for fixing on
- Material: PA6, recyclable



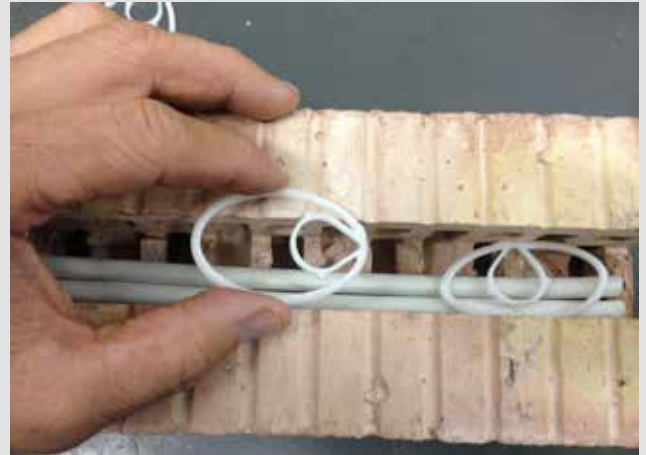
Item No.	Type	Design	SU	CB	PL
7510003	PAS01	For grounding strap 30 x 3.5 mm, round conductor diameter 7-10 mm, 7 connections 2.5-25 mm ²	1	50	2.000

The F-clip

Laying pipes and tubes is often a test of patience as both, due to their delivery form (drum goods), bear up inadequately in the provided wall slots. For this time-consuming application, f-tronic delivers a simple, but compelling tool: the F-clip.

While conventional installation (cable clips, etc.) must be hammered, lines and pipes can be fixed on the wall with one hand with the F-clip. You have a clear advantage with the F-clip, especially for problematic masonry such as steel concrete or bricks. Thanks to the white colour, nothing shines through the applied plaster and the installation material locks in place.

The development from f-tronic holds pipes and tubes up to 60 mm in place - no nail, without risk of injury and no additional tool - just a hand is enough.



Advantages at a glance

- Fast and tool-less cable fixation
In wall slits up to 60 mm
- High tension force
- No shining through the plaster thanks to color neutrality
- No damage to the cables is possible
- Easy installation thanks to practical finger loop
- Significantly reduced installation time - 50% quicker!

HALOGEN
FREE



F-clip

- Halogen-free
- Material: POM, recyclable

Item No.	Type	Design	SU	CB	PL
7410003	FClip	Fixing clip for pipes and cables, Up to slot width 60 mm	50	6.000	96.000

Cable bus

- Mounting possible with or without universal holder
- With quick release for easy and quick allocation
- High material elasticity
- Material: Polyamide, flame retardant
- Halogen-free
- Material: PA6, recyclable

Item No.	Type	Design	SU	CB	PL
7430001	KSH15	15 x NYM 3 x 1.5 mm ²	50	400	8.000
7430002	KSH30	30 x NYM 3 x 1.5 mm ²	25	250	5.000
7430003	KSH30B	30 x NYM 3 x 1.5 mm ² , flush to the wall	20	320	6.400
7430004	UH1	Universal holder for KSH15 and KSH30	50	3.000	48.000



Nail plate

- With hardened, zinc-plated nail
- Material: PP, recyclable

Item No.	Type	Design	SU	CB	PL
7440001	NS28/230	Nail plate with mounting Steel nail, 28 mm diameter, Nail 2 x 30 mm	100	3.000	96.000
7440002	NS28/240	Nail plate with mounting Steel nail, 28 mm diameter, Nail 2 x 40 mm	100	3.000	96.000
7440003	NS28/250	Nail plate with mounting Steel nail, 28 mm diameter, Nail 2 x 50 mm	100	3.000	96.000
7440004	NS35/340	Nail plate with mounting Steel nail, 35 mm diameter Nail 3 x 40 mm	100	3.000	48.000
7440005	NS35/350	Nail plate with mounting Steel nail, 35 mm diameter Nail 3 x 50 mm	100	3.000	48.000
7440006	NS35/360	Nail plate with mounting Steel nail, 35 mm diameter Nail 3 x 60 mm	100	3.000	48.000
7440007	NS35/370	Nail plate with mounting Steel nail, 35 mm diameter Nail 3 x 70 mm	100	3.000	48.000





Pressure Clip

- Flat design for a low installation height
- Wide and stable bracket with handle lip easy inserting or re-working
- Simple and quick assembly with nail or nail anchors, mounting hole diameter 6 mm
- High material elasticity
- Material: PA6, flame-resistant, recyclable
- Halogen-free

Item No.	Type	Design	SU	CB	PL
7420011	FT8	for 8 x NYM 3 x 1.5 mm ²	50	1.200	24.000
7420007	FT10	for 10 x NYM 3 x 1.5 mm ²	50	800	16.000
7420009	FT16	for 16 x NYM 3 x 1.5 mm ²	50	600	12.000

The robust variety!







Maximum protection for use at the highest level: f-tronic Industrial enclosures!

Also thanks to the new industry standard 4.0, IT is more and more finding its way into industrial processes, which results in an increasing decentralisation of measuring points, controls, sensors and actuators. This increasing decentralisation requires ever-smaller, more robust industrial enclosures.

It's clear that here extremely sensitive industrial technology is used which provides maximum performance only with the necessary protection against moisture, dust and oil. Perfectly suitable for this is the industrial enclosures from f-tronic. This is because it is extremely versatile, protects reliably and provides the necessary organisation which is necessary in industrial atmospheres like:

- machinery and plant construction;
- PC and data technology, also in
- automation technology;
- communication and instrumentation and control technology;
- the food and beverage industry;
- agriculture and
- traffic engineering

f-tronic offers a wide range of industrial enclosures that sets new standards. In various designs and sizes, it protects sensitive technical installations and guarantees safe and reliable production.

With our industrial enclosures, we are making a small contribution to the big picture - and are looking forward to the innovations of the future.

PVC industrial enclosures, cover in enclosures colour

- Circular seal
- Degree of protection IP 66
- Protection against mechanical damage: IK 05
- Temperature resistance: -20 up to +70 °C
- Insulating plugs for wall mounting
- Including cover in enclosuresg colour

Item No.	Type	Design	H x W x D (mm)	Color	SU	CB	PL
8110001	IBP1	Enclosures + cover PVC	105 X 105 X 66	grey / grey	4	112	1.344
8110002	IBP2	Enclosures + cover PVC	110 X 75 X 60	grey / grey	5	205	2.460
8110003	IBP3	Enclosures + cover PVC	135 X 74 X 72	grey / grey	6	132	1.584
8110004	IBP4	Enclosures + cover PVC	170 X 105 X 82	grey / grey	2	66	792
8110005	IBP5	Enclosures + cover PVC	170 X 130 X 85	grey / grey	2	48	576
8110006	IBP6	Enclosures + cover PVC	220 X 170 X 107	grey / grey	1	25	300
8110007	IBP7	Enclosures + cover PVC	270 X 220 X 105	grey / grey	1	14	168
8110008	IBP8	Enclosures + cover PVC	313 X 253 X 116	grey / grey	1	9	108
8110009	IBP9	Enclosures + cover PVC	340 X 270 X 105	grey / grey	1	10	120



PVC industrial enclosures, cover in transparent

- Circular seal
- Degree of protection IP 66
- Protection against mechanical damage: IK 05
- Temperature resistance: -20 up to +70 °C
- Insulating plugs for wall mounting
- Including cover in transparent

Item No.	Type	Design	H x W x D (mm)	Color	SU	CB	PL
8110010	IBP1T	PVC enclosures + cover PC	105 X 105 X 66	grey/ transparent	4	112	1.344
8110011	IBP2T	PVC enclosures + cover PC	110 X 75 X 60	grey/ transparent	5	205	2.460
8110012	IBP3T	PVC enclosures + cover PC	135 X 74 X 72	grey/ transparent	6	132	1.584
8110013	IBP4T	PVC enclosures + cover PC	170 X 105 X 82	grey/ transparent	2	66	792
8110014	IBP5T	PVC enclosures + cover PC	170 X 130 X 85	grey/ transparent	2	48	576
8110015	IBP6T	PVC enclosures + cover PC	220 X 168 X 107	grey/ transparent	1	25	300



Special processing industrial enclosures

f-tronic offers you a fast and easy solution for the mechanical machining of industrial enclosures. We drill or mill your enclosures in small batches, individually for your application. Send us a drawing with the dimensions of the drilling or milling and the industry enclosures type and we will create an individual offer soon.

Please send your request to our sales team
Phone 06893 / 9483-34





Ventilation usage

- Material: BAY, recyclable

Item No.	Type	Design	Color	SU	CB	PL
8120001	IBP-VI32	M32 - diameter 32 mm	RAL 7035	2	100	1.200
8120002	IBP-VI29	PG29 - diameter 37 mm	RAL 7032	2	100	1.200



Wall mounting straps

- Material: Steel galvanized and chromatised

Item No.	Type	Design	SU	CB	PL
8120003	IBP-MS	Set 4 pieces	4	250	9.100



Drainage plug

- Ensures protection class IP 55
- Material: PA6, recyclable

Item No.	Type	Design	Color	SU	CB	PL
8120004	IBP-DP	For hole 9 mm	RAL 7035	10	100	8.400

Levels nipple IP 54

- Ensures protection class IP 55
- Material: PVC

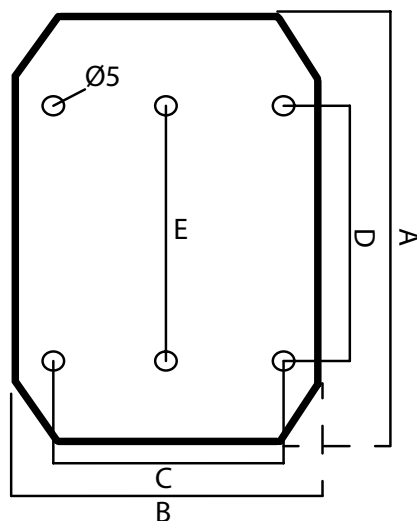
Item No.	Type	Design	Color	SU	CB	PL
7290086	STM25	Levels nipple M25	grey	20	800	51.200
7290087	STM32	Levels nipple M32	grey	20	600	38.400
7290088	STM40	Levels nipple M40	grey	20	400	25.600



Mounting plate

- Material: Sheet steel

Article	Type	A (mm)	B (mm)	C (mm)	D (mm)	E (mm)	SU	CB	PL
8120006	IBP-MP1	156	95	-	-	130	1	20	1.000
8120007	IBP-MP2	156	120	65	130	-	1	20	790
8120008	IBP-MP3	160	212	-	-	-	1	20	430
8120009	IBP-MP4	205	156	130	150	-	1	20	460
8120010	IBP-MP5	258	208	161	221	-	1	10	270
8120011	IBP-MP6	295	235	156	216	-	1	10	180
8120012	IBP MP7	320	250	210	250	-	1	10	150



General terms and conditions of f-tronic GmbH

§ 1 General

(1) The following general terms and conditions (GTC) apply in commercial transactions with all customers of f-tronic; in non-commercial business dealings, these terms and conditions shall apply in accordance with paragraph 7.

(2) Terms and conditions of the customer or any third party do not apply, even if f-tronic does not separately object to their application in a particular case. Even if f-tronic refers to a letter that contains the business conditions of the customer or a third party, or which refers to them, compliance with the validity of those terms and conditions does not lie therein.

(3) Offer and conclusion of contract

a. All offers from f-tronic are without obligation and non-binding, unless they are marked expressly as binding or contain a specific deadline. F-tronic can accept orders or requests within 14 days of receipt.

b. The written purchase contract, including these terms and conditions, is solely authoritative for legal relations between f-tronic and the customers. This fully reflects all agreements between the parties on the subject of the agreement. Oral promises from f-tronic prior to conclusion of this agreement are not legally binding and oral agreements of the parties will be replaced by the written contract, if it does not specifically arise from them that they are legally binding.

c. Additions and amendments to the agreements including these general terms and conditions must be in writing to be effective. With the exception of directors or authorised staff, the employees of f-tronic may not make different oral agreements.

d. Details from f-tronic on the object of delivery or service (such as weights, dimensions, use values, power handling, tolerances and technical data) as well as the representations from f-tronic (such as drawings and illustrations) are only approximate, as far as the usability for the contractually intended purpose does not require an exact match. They are not guaranteed characteristics, but descriptions or identifications of the delivery or service. Standard deviations and variations that occur due to legal regulations or constitute technical improvements, as well as the replacement of components by equivalent parts are admissible insofar as they do not affect the usability for the contractually intended purpose.

e. F-tronic reserves the ownership or copyright on all offers given by it as well as cost estimates and drawings, illustrations, calculations, brochures, catalogues, tools and other documents and tools provided to the customer. The customer may not make these items, as such regarding their contents, accessible to third parties, publish them, or use or reproduce them through third parties without the express consent of f-tronic. At the request of f-tronic, the customer has to return the items completely and destroy copies made if they are no longer needed by the customer in the ordinary course of business, or if negotiations do not lead to the conclusion of a contract.

§ 2 Prices

(1) Net prices

The prices apply to the service and delivery scope specified in the order confirmations. Additional or special services are charged separately. Packaging costs are always included in the price of the goods. Special packaging is invoiced to the customer at cost price. The prices are in Euro ex works plus the statutory value-added tax, customs duties and fees for export shipments and other public charges. Additional special labels are not included in the price.

(2) Surcharge

As far as the list prices from f-tronic are the basis of the agreed prices and the delivery is made no more than four months after conclusion of the contract, the list prices from f-tronic (each minus an agreed percentage or fixed discount) apply for delivery. Exceptions to this are agreed prices in contracts.

(3) Due date

Invoice amounts are to be paid, unless otherwise agreed in writing, within 30 days without any deduction. For payment within ten calendar days after the invoice, f-tronic grants a 2% discount on the net price. Decisive for the date of payment is the admission at f-tronic. Cheques are only valid after redemption as payment.

(4) Default

If the customer does not stick to the due date, the outstanding amounts gain interest at a rate of 5% p.a. from the due date; the right to claim higher interest rates and further damage in the event of default shall remain unaffected.

(5) Set-off

Set-off with counterclaims of the customer or the withholding of payments due to such claims is permitted only if the counterclaims are undisputed or legally ascertained.

(6) Advance / security deposit

F-tronic is authorised to carry out or perform outstanding deliveries or services only against advance payment or security deposit if, after conclusion of the contract, circumstances become known which are liable to reduce the creditworthiness of the customer significantly and through which the payment by the customer of the open requirements of f-tronic from the respective contractual relationship (including from other individual orders, governed by the same agreement) is endangered. For customers who are not known to f-tronic, f-tronic only carries out services against payment in advance and grants the customer a 2% discount.

§ 3 Delivery

(1) Deliveries are made ex works.

(2) If the value of an order exceeds the amount of EUR 250 net, the delivery occurs carriage paid ex warehouse up to the warehouse address of customer within Germany. For orders below 250 EUR and above 125 EUR, shipping costs and reduced surcharges in the sum of 16 EUR and for orders below 125 EUR in the sum of 24 EUR will be charged for deliveries within Germany. Track deliveries, special products and

special distributions or special sizes are shipped freight forward at the expense of the customer.

(3) Prospect dates and deadlines from f-tronic for deliveries and services are always only approximate unless a fixed period or a fixed date is expressly confirmed or agreed in writing. If dispatch has been agreed, delivery periods and delivery dates refer to the date of delivery to the forwarding agent, carrier or third party otherwise assigned with transportation.

(4) F-tronic can - without prejudice to its rights from default of the customer - request from the customer an extension of delivery and service deadlines or a postponement of delivery and service dates by the period in which the customer does not fulfill its contractual obligations to f-tronic.

(5) F-tronic is not liable for impossibility of delivery or delivery delays, if these are caused by force majeure or other events which f-tronic does not have to cover for and which are not foreseeable at the time of the conclusion of the contract (such as malfunctions of any kind, difficulties in material or energy supply, transport delays, strikes, lawful lockouts, shortage of labour, energy or raw materials, difficulties in obtaining necessary regulatory approvals, official measures or failed, incorrect or non-timely delivery by suppliers).

If such events substantially hinder delivery or performance of a service or make delivery or performance impossible for f-tronic and the disability is not only of temporary duration, f-tronic is entitled to withdraw the contract. In the face of hindrances of a temporary duration, the delivery or service periods extend or the delivery or performance dates move by the period of the hindrance plus a reasonable deadline. As far as the acceptance of the delivery or service is not to be expected of the customer as a result of the delay, the customer may withdraw from the contract upon immediate written notice to f-tronic.

(6) F-tronic is entitled to partial deliveries, if

- the partial delivery is usable for the customer within the framework of the contractual purpose;
- the delivery of the remainder of the ordered goods is ensured and
- this generates no significant additional expenses or costs occur for the customer.

(7) If f-tronic falls behind with a delivery or service or if a delivery or service is impossible for any reason, f-tronic's compensation liability is limited in accordance with point 7 of these general terms of delivery.

§ 4 Place of fulfillment, shipping, transfer of risk, Acceptance

(1) Place of fulfillment

Place of performance for all obligations arising from the contractual relationship is Saarbrücken, insofar as nothing else is determined. If f-tronic is also liable for installation, place of fulfillment is the location where the installation is to be done.

(2) Shipping method

The mode of dispatch and packaging are subject to the reasonable discretion of f-tronic.

(3) Transfer of risk

At the latest, the risk transfers to the customer upon handover of the object of delivery, whereby the commencement of the loading process is decisive, to the forwarding agent, freight carrier or other third parties specified for carrying out the dispatch. This applies even if partial deliveries are made or f-tronic has accepted other services (such as shipping or installation). If the shipment or transfer is delayed as a result of a circumstance the cause of which lies with the customer, the risk is passed to the customer from the day on which the delivery item is ready for shipment and f-tronic has shown this to the customer.

(4) Storage costs

The customer bears storage costs after the passing of risk. For storages by f-tronic, the storage costs are 0.25% of the invoice amount for the goods to be stored per elapsed week. Both the assertion and evidence of another or lower storage costs are reserved by both sides

(5) Insurance

The shipment is insured by f-tronic against theft, transport, fire and water damage or other insurable risks only at the express request of the customer and at the customer's own expense.

(6) Acceptance

If an acceptance has to take place, the goods are deemed accepted, if - the delivery and, if f-tronic is liable for the installation, the installation is completed;

- f-tronic communicates this with the customer and has requested acceptance in allusion to fictitious acceptance of work according to paragraph 6;

- twelve business days have passed since delivery or installation, or the customer has begun using the purchased goods (e.g. the supplied system has gone into operation) and in this case six working days have passed since delivery or installation, and

- the customer has neglected acceptance within this period for a reason other than a shortage indicated to f-tronic, that makes the purchased goods impossible to use or if the purchased good has been significantly damaged.

§ 5 Reservation of proprietary rights

The goods remain property of f-tronic until full payment of all outstanding monies, including subsidiary claims, claims for damages and redemptions of cheques and bills. The reservation of proprietary rights continues even if outstanding f-tronic monies are included in a current invoice and the balance is drawn and recognized. The purchaser is entitled to process and sell the goods, taking into account the following provisions: Powers of the purchaser to process reserved goods in the proper business process, and with the cessation of payment of the purchaser or with the application for or commencement of the insolvency proceedings. Through processing, the buyer acquires no ownership of the new thing according to § 950 BGB. The processing is performed for f-tronic without incurring liabilities. If the goods are processed, mixed or blended with other items, f-tronic acquires the co-ownership of the new item in proportion to the value of their reserved goods to the total

value of the goods. The buyer will assign f-tronic the outstanding money as well as all rights from the resale of the reserved goods, namely in a proportionate manner and if the goods have been processed, combined or mixed and f-tronic has acquired a co-ownership of them in the amount of f-tronic's invoice value. In the latter case, f-tronic shall at this assignment submit a fraction of the respective purchase price claim appropriate to the invoice value of their goods to the invoice value of the item. If the buyer has sold the outstanding money in the context of real factoring, it shall cede the outstanding money against the factor to f-tronic. F-tronic accepts this cessation. F-tronic will not collect the outstanding monies ceded, provided the buyer meets their payment obligations. The direct debit mandate expires on default of payment of the purchaser. In this case, f-tronic is authorized by the purchaser to inform the customers of the assignment and to collect the outstanding monies itself.

The buyer is obliged to, on request, give f-tronic a precise inventory of outstanding monies owed with names and address of the customers, amount of the individual outstanding monies, invoice date etc. and to share all information necessary for the assertion of outstanding monies ceded with f-tronic and to allow the verification of this information. The buyer is entitled to collect the outstanding monies itself as f-tronic gave the buyer no other instructions. If the value of the securities existing for us exceeds the outstanding monies of f-tronic by a total of more than 20%, on request of the buyer, f-tronic is obliged in this respect to release securities at its own discretion.

§ 6 Warranty, quality material defects

(1) Warranty period

The warranty period is one year after delivery or, as far as acceptance is required, from the acceptance.

(2) Duty to inspect and goods defect complaint requirement

The delivered goods are to be investigated carefully immediately after delivery to the customer or to the third party designated by the customer. They are considered approved if f-tronic is not presented with a written notice of defects with regard to obvious defects or other defects which were recognizable in an immediate, thorough investigation, within seven working days after delivery of the delivery item or otherwise within seven working days after the discovery of the defect or at any previous time at which the defect was evident for the customer during normal use of the delivery item without further investigation. At the request of f-tronic, the rejected delivery item is to be returned f-tronic carriage paid. In case of justified complaint, f-tronic shall reimburse the costs of the cheapest shipping route; this does not apply if the costs increase because the delivery item is located at a place other than the place of intended use.

(3) Defect repair

In case of goods defects of the delivered goods, f-tronic is, at their discretion within a suitable period, obliged and authorised to carry out rectification of defects or replacement delivery. In the case of failure, i.e. the impossibility, unacceptability, refusal or unreasonable delay of repair or replacement, the customer can withdraw from the contract or appropriately reduce the purchase price.

(4) Fault

If f-tronic is at fault for a defect, the customer can, under the conditions specified in paragraph 7, claim compensation for damage.

(5) Exclusion/extra costs

The warranty does not apply if the buyer alters the delivery item or allows it to be altered by a third party without the consent of f-tronic and the removal of defects is thereby made impossible or unreasonably difficult. In any case, the customer has to bear the additional costs incurred by altering the defect

§ 7 Liability

(1) The liability of f-tronic to pay compensation, regardless of the legal reason, in particular for impossibility, delay, defective or incorrect delivery, breach of contract, violation of duties during contractual negotiations and tort is, if it in each case comes down to a fault, limited in accordance with this point 7.

(2) F-tronic is not liable in the case of simple negligence of its institutions, legal representatives, employees or other vicarious agents as far as it is not a violation of essential contractual obligations. The obligation of timely delivery and installation of delivery items free of substantial defects are contractual obligations, as well as counselling, protection and care obligations which should allow the customer the contractual use of the delivery item or which aim to protect the life or limb of the personnel of the customer or protect its property from significant damage.

(3) If f-tronic, in accordance with this point 7 b. is liable for damages, such liability is limited to damages which f-tronic envisaged upon conclusion of the contract as a possible consequence of a contract breach, or should have envisaged upon due diligence. Indirect damages and consequential damages which are due to defects in the delivered goods, are also eligible to be replaced if such damage is typically to be expected during normal use of the delivery item.

(4) In the case of liability for simple negligence, the replacement liability of f-tronic is for property damage and any additional financial losses resulting from this is limited to an amount of €6 million per claim (according to the current coverage of product liability insurance or liability insurance), even if it is a violation of essential contractual obligations.

(5) The preceding liability exclusions and limitations shall apply to the same extent in favour of institutions, legal representatives, employees and other vicarious agents of f-tronic.

(6) As far as f-tronic gives technical information or advice and this information or advice is not part of the contractually agreed scope of service owed by f-tronic, this is done free of charge and under exclusion of any liability.

(7) The restrictions of this point 7 shall not apply to the liability of f-tronic due to intentional behaviour, guaranteed characteristics of state, due to injury of life, body or health or according to the product liability law.

§ 8 Return

The buyer has no right to exchange or return goods delivered in accordance with the contract. Should f-tronic exceptionally agree to exchange or retract the goods, the following applies: The exchange or withdrawal must be agreed in writing with f-tronic before returning the goods. The goods must be sent back carriage paid and free of costs to one of the f-tronic warehouses at the risk of the customer. The goods must arrive at f-tronic in perfect condition; there must be no used, already assembled, broken, defective or constructively overhauled material. It is further agreed that f-tronic shall invoice the purchaser 15% of the value of the exchanged or returned goods invoiced as reimbursement of costs if no other amount has been agreed separately in writing.

§ 9 Final provisions

(1) Place of jurisdiction

Place of jurisdiction for all possible disputes arising from the business relationship between f-tronic and its customers/clients is Saarbrücken, at the discretion of f-tronic, or the headquarters of the customer/client. Saarbrücken is exclusive place of jurisdiction for actions against f-tronic. Mandatory legal provisions on exclusive jurisdiction remain unaffected by this regulation.

(2) Choice of law

The relations between f-tronic and its clients/customers are subject to only the law of the Federal Republic of Germany. The United Nations Convention on contracts for the international sale of goods of 11th April 1980 (CISG), does not apply.

(3) Interpretation

Insofar as the agreement or these general conditions of sale contain loopholes, the legally effective regulations that the parties would have agreed to according to the economic objectives of the contract and the purpose of these general conditions of sale in which the loopholes had been known are considered as agreed for filling these loopholes.

Status: 2014-03

With this publication of these general terms and conditions, all previous f-tronic terms lose their validity.

Imprint:

© f-tronic GmbH 2014-2015

Sources for images: © fotolia.com, © primo-gmbh.com, © f-tronic GmbH, © phy Zick-fotolia.com (Cover, p.3, S.37), © Abstractus Designus-fotolia.com (Cover), © Artem Shcherbakov-fotolia.com (Cover, p.3, p.102), © Okea-fotolia.com (Cover, p.3, p.102) © Trifonenko Ivan-fotolia.com (Cover, p.3, p.102), © pure-life-pictures-fotolia.com (p.46), © Kletr-fotolia.com (p.46), © Creativa-fotolia.com (p.46), © Dmitry Vereshchagin-fotolia.com (p.105), © Rainer Plendl-fotolia.com (p.105), © Sasint-fotolia.com (p.105), © Friday-fotolia.com (p.105).

Design & Grafik: f-tronic

Technical Errors and printing errors excepted

Our general terms and conditions are available

to download at: www.f-tronic.de

catalog stand 09.2015

Our corporate principles

Corporate values

Sustainable assurance and further development of the company take centre stage in all decisions. Humanity, trust, treating each other with respect and loyalty define our daily actions. We are true to our word (and handshake). Professional behaviour and short, clear decision paths are the characteristics of our success. Objectives of the company are jointly agreed upon and implemented independently. We live our mission every day.

Sustainable performance for our customers

We are guided by the wishes and objectives of our customers. We always guarantee our customers the best performance and quality. In return, we expect a fair reward for this. Only satisfied customers guarantee the success of our company through a long term partnership.

Employees and managers

Humanity, trust, tolerance, respectful behaviour, truth and loyalty in cooperation form the basis of satisfaction and create fun at work. We always demand high performance and promote employees through targeted measures in their education and training. We train young employees in the industrial and commercial sector and support them in their professional development. Our executives are thereby the benchmark of our actions.

The f-tronic management:

competitive advantage, creativity and innovation

Together with our customers, employees and suppliers, we need to develop innovative products and solutions and implement them quickly and cost-effectively. Our customers must also achieve a sustainable benefit and competitive advantage. This is an ongoing challenge and ensures us an advantage against the competition.

Suppliers are partners

We aspire to long-term partnerships with suppliers and expect high performance/price attractiveness, reliability, flexibility, high quality awareness and sustainable action.

Profit orientation

We need to generate profits. These secure us investments in our future so that we fulfill our obligations towards our customers, employees, partners and shareholders. Profit is, for us, confirmation that our actions are correct.

Future and sustainability

We see the future as a challenge for all of us and have a positive attitude to people and our unique environment. We constantly optimize our products in terms of minimal environmental impact, resource conservation and energy efficiency. Long-term goals are the basis of our trade.

Someone who has goals is busy with the future.

You can reach our office team at:

Stock programme division

Ms Nicole Becker
Internal sales management
Tel. 06893 9483-10
E-mail n.becker@f-tronic.de

Mr Bettina Geiger
Tel. 06893 9483-251
E-mail b.geiger@f-tronic.de

Mr Christopher Ruffing
Tel. 06893 9483-34
E-mail c.ruffing@f-tronic.de

Metre cabinets/field distributors division

Mr Kurt Heck
Internal sales management
Tel. 06893 9483-42
E-mail k.heck@f-tronic.de

Mr Peter Burger
Tel. 06893 9483-57
E-mail p.burger@f-tronic.de

Mr Heiko Jungbluth
Tel. 06893 9483-51
E-mail h.jungbluth@f-tronic.de

For excellent results



Supreme discipline plastic manufacturing

25 years of experience in plastics technology have shaped us and make us experts in design and workmanship. We repeatedly demonstrate that to our national and international customers. And to you too.

Whether you want to produce a product more economically or have an idea for a new product: f-tronic supports you not only in designing the component, but also in the choice of materials. We take the manufacturing of injection moulds very carefully - for exactly the result you want. This will guarantee our strong team and state-of-the-art plastic injection molding machines of 200 to 12500 kN clamping force and shot weight from few grams up to over 2 kg.

- We will advise you from the development to the assembly of whole prototype groups.
- We guarantee functionality and longevity Your products
- Alternative tools and cavity design
- We point out structural vulnerabilities, using 3D-CAD, 3D filling simulation and 3D printers.
- Whether it's tear strength, heat resistance, shore hardness, UV, oil and chemical resistance – we can find the perfect values.

What disciplines do we love the most? Two-components and precision injection moulding as well as the metal substitution. Challenge us!

Engineering at the highest level of performance

Our custom tool design has something ready for you: minimum cycle times and an optimal number of cavities. So you can benefit from unbeatable prices thanks to low processing costs.

- Modern development tools: SolidWorks, Mold flow and 3D printers
- Mold-flow simulation: optimized form filling, distortion and shrinkage analysis. DoE for a high component quality
- A high degree of automation guarantees fast turn-around
- Close cooperation with universities and international granulate manufacturers ensures the availability of optimum materials.
- The desired material wasn't there? We will develop it for you.
- Work according to international standards: REACH, RoHS and national guidelines, VDE, ÖVE.

Tool construction at maximum speed

We are unmatched in the fast and competent coordination of design, construction, and manufacturing. We never lose sight of the details. The proof: storing your tools in fireproof tool storage is guaranteed.

Added value with system

F-tronic inspires its customers with a versatile all-round service which no-one can replicate: We check purchased parts according to your guidelines, undertake procurement processes for you and are willing to go to Asia for this, thanks to our international Sourcing Department.

We use close co-operation with qualified partners to your advantage: Even elaborate installation work is easy, inexpensive and flexible. More precisely: Fittings, application of seals, assembly, gluing, ultrasonic welding, printing, labeling and packaging.

First-class logistics service - 24 hours a day

The least we can do for you: on-time free delivery in transport containers (tray) requested by you - even with Kanban system if necessary. Why we can do that so well? Because we have been able to learn from many years of practical experience and are much more than just a contract manufacturer.

You can also benefit from a professional partner in plastics technology.



Our contact details:

f-tronic GmbH
f-tronic plastics technology
Email: kunststofftechnologie@f-tronic.de
Zum Gerlen 21–25
D-66131 Saarbrücken
Phone: + 49 6893 9483-31

What we need to know -

Your highway to a quick offer:

1. Your full contact information with Contact person
2. Product description with drawing and if necessary, a photo
3. Exact dimensions and weights
4. Annual volumes and request batches
5. Are there any tools? If so, precise description
6. Target prices, if available
7. Timetable for implementation

